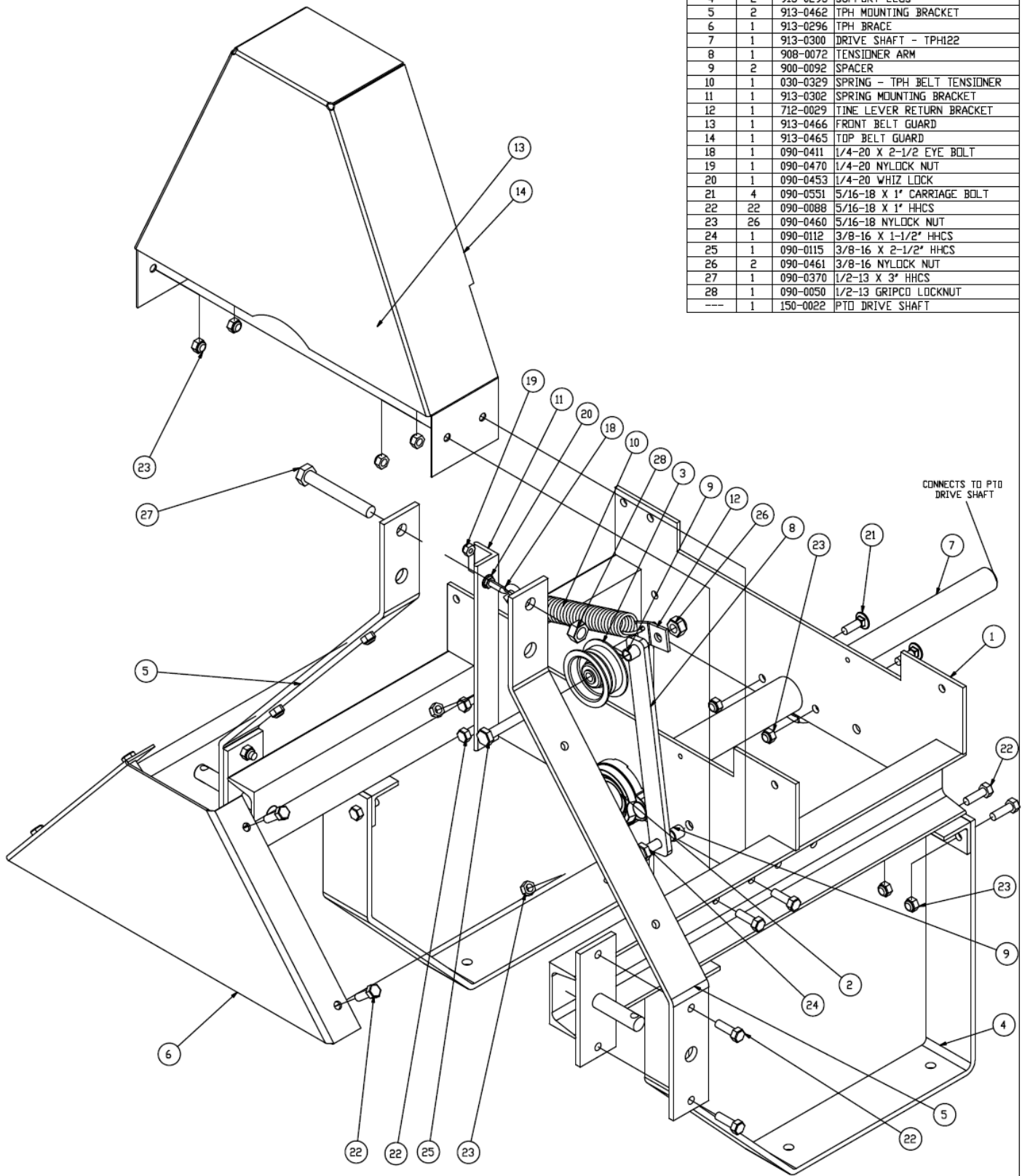


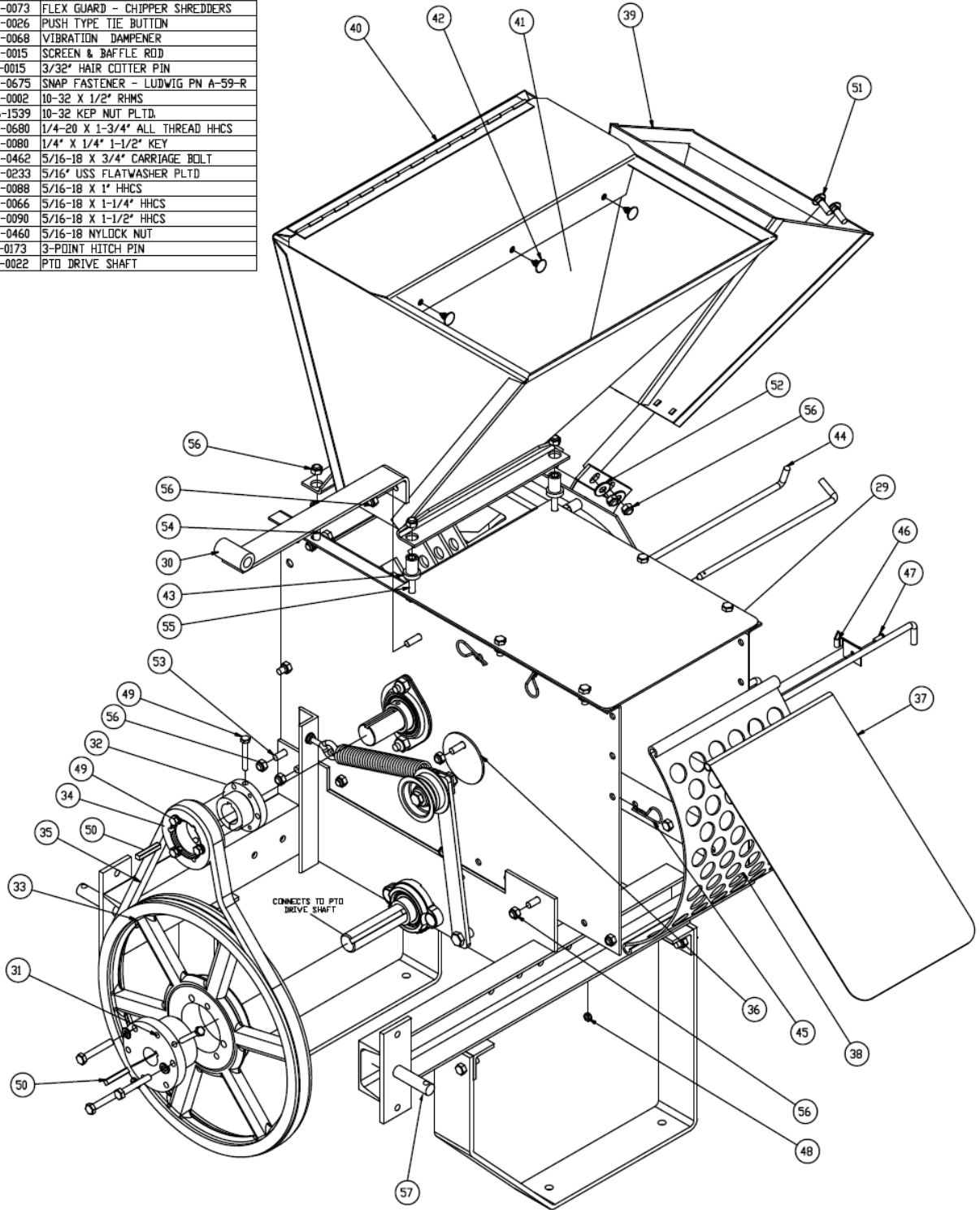
TPH-123 FRAME ASSEMBLY

Parts List

| ITEM | QTY | PART # | DESCRIPTION |
|------|-----|----------|-----------------------------|
| 1 | 1 | 913-0460 | TPH123 FRAME WELDMENT |
| 2 | 2 | 030-0055 | 1" BORE BEARING |
| 3 | 1 | 909-0012 | IDLER PULLEY |
| 4 | 2 | 913-0293 | SUPPORT LEGS |
| 5 | 2 | 913-0462 | TPH MOUNTING BRACKET |
| 6 | 1 | 913-0296 | TPH BRACE |
| 7 | 1 | 913-0300 | DRIVE SHAFT - TPH122 |
| 8 | 1 | 908-0072 | TENSIONER ARM |
| 9 | 2 | 900-0092 | SPACER |
| 10 | 1 | 030-0329 | SPRING - TPH BELT TENSIONER |
| 11 | 1 | 913-0302 | SPRING MOUNTING BRACKET |
| 12 | 1 | 712-0029 | TINE LEVER RETURN BRACKET |
| 13 | 1 | 913-0466 | FRONT BELT GUARD |
| 14 | 1 | 913-0465 | TOP BELT GUARD |
| 18 | 1 | 090-0411 | 1/4-20 X 2-1/2" EYE BOLT |
| 19 | 1 | 090-0470 | 1/4-20 NYLOCK NUT |
| 20 | 1 | 090-0453 | 1/4-20 WHIZ LOCK |
| 21 | 4 | 090-0531 | 5/16-18 X 1" CARRIAGE BOLT |
| 22 | 22 | 090-0088 | 5/16-18 X 1" HHCS |
| 23 | 26 | 090-0460 | 5/16-18 NYLOCK NUT |
| 24 | 1 | 090-0112 | 3/8-16 X 1-1/2" HHCS |
| 25 | 1 | 090-0115 | 3/8-16 X 2-1/2" HHCS |
| 26 | 2 | 090-0461 | 3/8-16 NYLOCK NUT |
| 27 | 1 | 090-0370 | 1/2-13 X 3" HHCS |
| 28 | 1 | 090-0050 | 1/2-13 GRIPCO LOCKNUT |
| --- | 1 | 150-0022 | PTO DRIVE SHAFT |

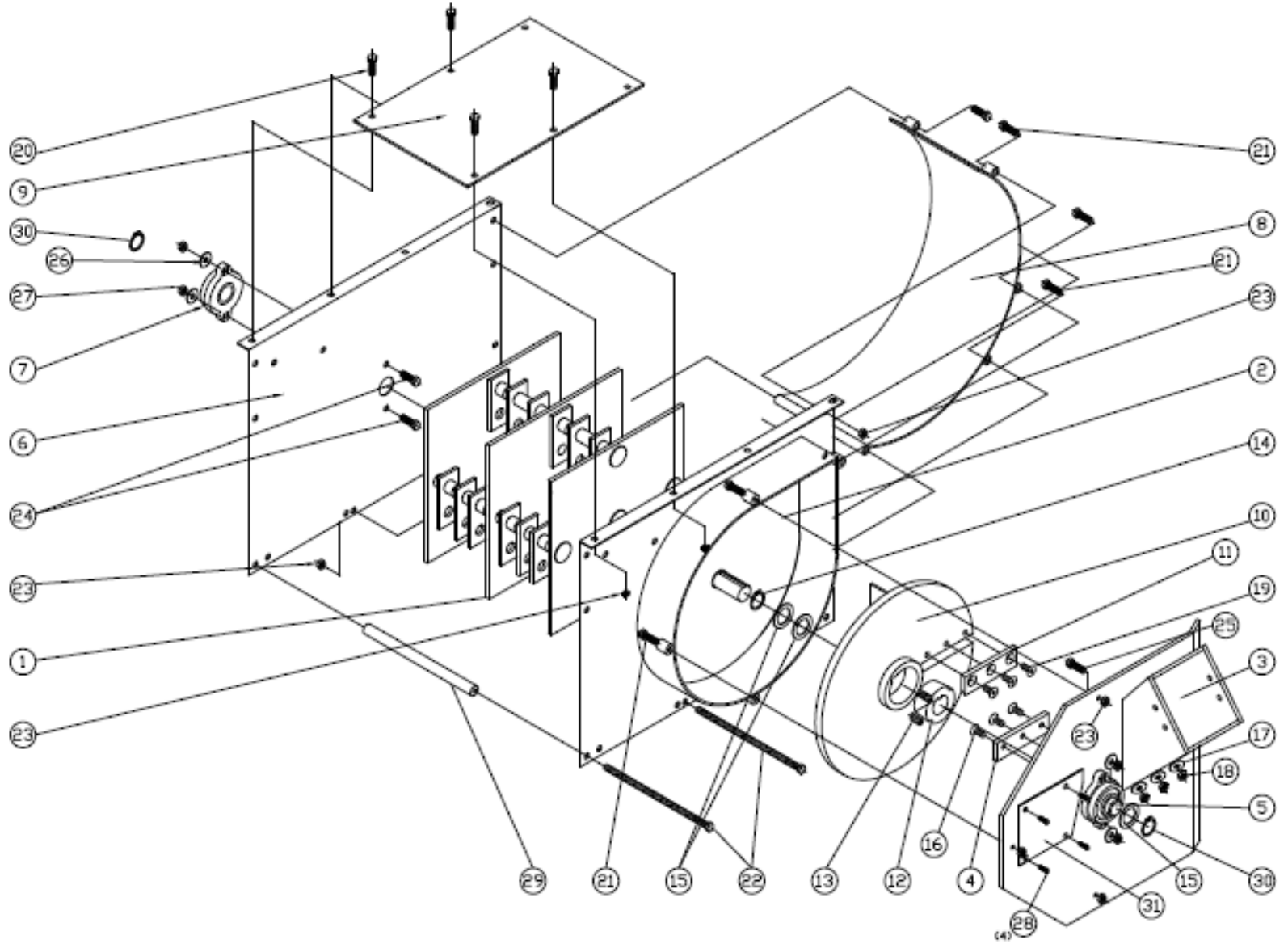


| TPH BASIC AND PULLEY ASSEMBLY | | | |
|-------------------------------|-----|----------|----------------------------------|
| ITEM | QTY | PART # | DESCRIPTION |
| 29 | 1 | 900-0147 | 12P BASIC UNIT - 96 |
| 30 | 1 | 913-0309 | UPPER SUPPORT WELDMENT |
| 31 | 1 | 030-0333 | 1" SK BUSHING |
| 32 | 1 | 030-0052 | BUSHING SH 1-3/16" BORE |
| 33 | 1 | 030-0328 | 3V14 2 GR SHEAVE |
| 34 | 1 | 030-0493 | 3V3.35 2GR SHEAVE |
| 35 | 1 | 030-0330 | BELT - 3VX530 TWO GROOVE |
| 36 | 1 | 900-0040 | COVER PLATE |
| 37 | 1 | 900-0010 | BAFFLE PLATE |
| 38 | 1 | 500-0004 | 1" DIA SCREEN - 12P |
| 39 | 1 | 913-0379 | CHIPPER HOPPER KIT |
| 40 | 1 | 900-0248 | SHREDDER HOPPER |
| 41 | 1 | 900-0073 | FLEX GUARD - CHIPPER SHREDDERS |
| 42 | 3 | 800-0026 | PUSH TYPE TIE BUTTON |
| 43 | 4 | 500-0068 | VIBRATION DAMPENER |
| 44 | 4 | 500-0015 | SCREEN & BAFFLE ROD |
| 45 | 3 | 100-0015 | 3/32" HAIR COTTER PIN |
| 46 | 1 | 090-0675 | SNAP FASTENER - LUDWIG PN A-59-R |
| 47 | 1 | 090-0002 | 10-32 X 1/2" RHMS |
| 48 | 1 | 706-1539 | 10-32 KEP NUT PLTD. |
| 49 | 5 | 090-0680 | 1/4-20 X 1-3/4" ALL THREAD HHCS |
| 50 | 2 | 080-0080 | 1/4" X 1/4" 1-1/2" KEY |
| 51 | 4 | 090-0462 | 5/16-18 X 3/4" CARRIAGE BOLT |
| 52 | 4 | 090-0233 | 5/16" USS FLATWASHER PLTD |
| 53 | 18 | 090-0088 | 5/16-18 X 1" HHCS |
| 54 | 2 | 090-0066 | 5/16-18 X 1-1/4" HHCS |
| 55 | 2 | 090-0090 | 5/16-18 X 1-1/2" HHCS |
| 56 | 30 | 090-0460 | 5/16-18 NYLOCK NUT |
| 57 | 2 | 911-0173 | 3-POINT HITCH PIN |
| --- | 1 | 150-0022 | PTO DRIVE SHAFT |



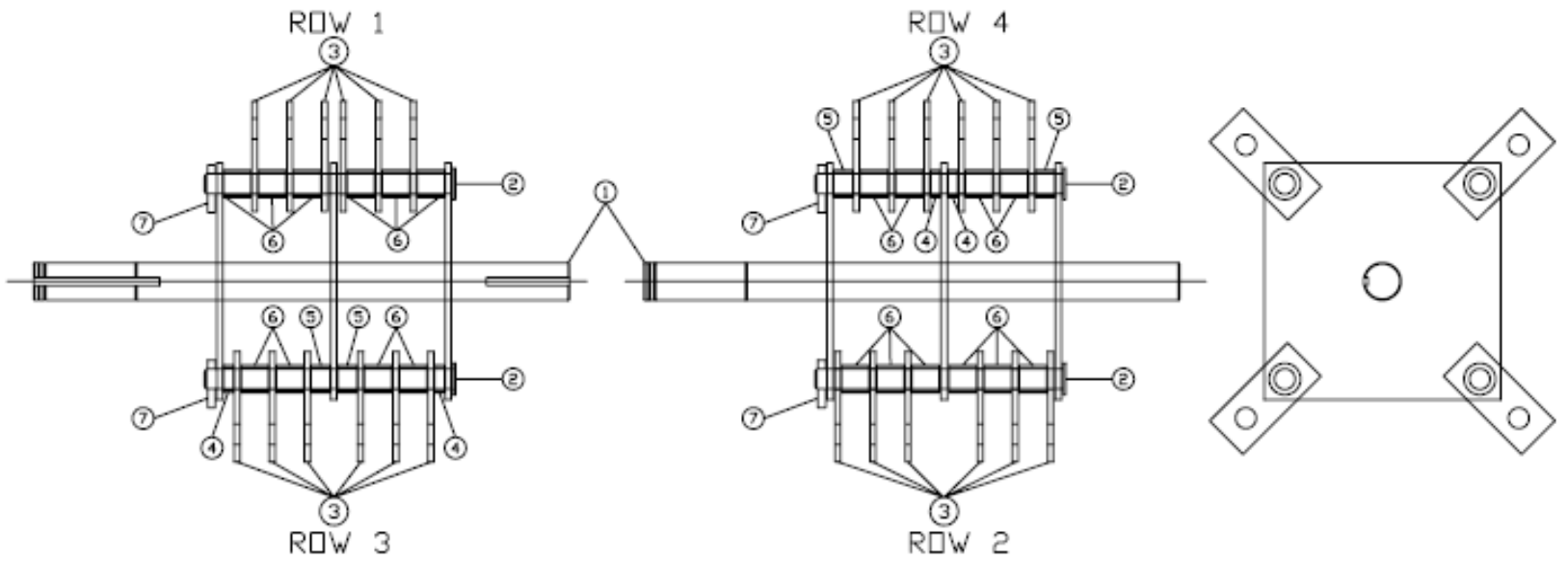
TPH123 BASIC AND PULLEY ASSEMBLY

12P/PT/PTE BASIC MACHINE ASSEMBLY



12P/PT/PTE
BASIC MACHINE ASSEMBLY

900-0148
12P/PT/PTE
ROTOR ASSEMBLY



12P/PT/PTE
ROTOR ASSEMBLY

**900-0147 – 12P/PT/PTE BASIC MACHINE
PARTS LIST**

| ITEM # | PART # | QTY | DESCRIPTION |
|---------------|---------------|------------|--|
| 1 | 900-0148 | 1 | ROTOR ASSEMBLY |
| 2 | 900-0097 | 1 | CHIPPER SIDE PLATE WELDMENT |
| 3 | 900-0336 | 1 | CHIPPER PLATE AND CHUTE WELDMENT |
| 4 | 913-0325 | 1 | WEAR PLATE |
| 5 | 030-0279 | 1 | 1 3/16" BEARING |
| 6 | 900-0348 | 1 | DRIVE SIDE PLATE |
| 7 | 030-0279 | 1 | 1 3/16" BEARING |
| 8 | 900-0005 | 1 | SCROLL WELDMENT |
| 9 | 900-0045 | 1 | TOP PLATE |
| 10 | 900-0243 | 1 | CHIPPER DISK – COMPLETE WITH KNIFE |
| 11 | 913-0259 | 1 | KNIFE KIT – COMPLETE WITH HARDWARE AND LOCTITE |
| 12 | 030-0118 | 1 | TAPERLOCK BUSHING |
| 13 | 020-0001 | 2 | 3/8-16 X 5/8" SET SCREW |
| 14 | 030-0117 | 1 | RETAINING RING |
| 15 | 090-0023 | 3 | SHIM |
| 16 | 090-0677 | 3 | 1/4-20 x 1" CARRIAGE BOLT |
| 17 | 090-0245 | 3 | 1/4 SAE FLATWASHER |
| 18 | 090-0470 | 3 | 1/4-20 NYLOCK NUT |
| 19 | 090-0258 | 3 | 5/16-18 X 3/4" FHSCS |
| 20 | 090-0088 | 4 | 5/16-18 X 3/4" HHCS |
| 21 | 090-0089 | 9 | 5/16-18 X 1 1/4" HHCS |
| 22 | 500-0064 | 2 | 5/16-18 X 9 1/2" HHCS |
| 23 | 090-0048 | 17 | 5/16-18 GRIPCO LOCK NUT |
| 24 | 090-0110 | 2 | 3/8-16 X 1" HHCS |
| 25 | 090-0121 | 2 | 3/8-16 X 1 1/4" HHCS |
| 26 | 090-0240 | 4 | 3/8" SAE FLATWASHER |
| 27 | 090-0049 | 4 | 3/8-16 GRIPCO LOCK NUT |
| 28 | 090-0162 | 4 | 10-32 X 3/8" SELF TAPPING SCREW |
| 29 | 500-0020 | 2 | SPACER |
| 30 | 090-0676 | 2 | SHR-118 RETAINING RING |
| 31 | 900-0071-1 | 1 | ACCESS COVER |

900-0148 – 12P/PT/PTE ROTOR ASSEMBLY

| ITEM # | PART # | QTY | DESCRIPTION |
|---------------|---------------|------------|--------------------|
| 1 | 900-0084 | 1 | ROTOR WELDMENT |
| 2 | 900-0100-3 | 4 | HAMMER ROD |
| 3 | 500-0008 | 24 | HAMMERS |
| 4 | 500-0010 | 4 | SPACER – 5/16" |
| 5 | 500-0012 | 4 | SPACER – 5/8" |
| 6 | 500-0011 | 20 | SPACER – 7/8" |
| 7 | 030-0153 | 4 | GROOVE PIN |