

# PARTS LIST AND SCHEMATIC DIAGRAMS

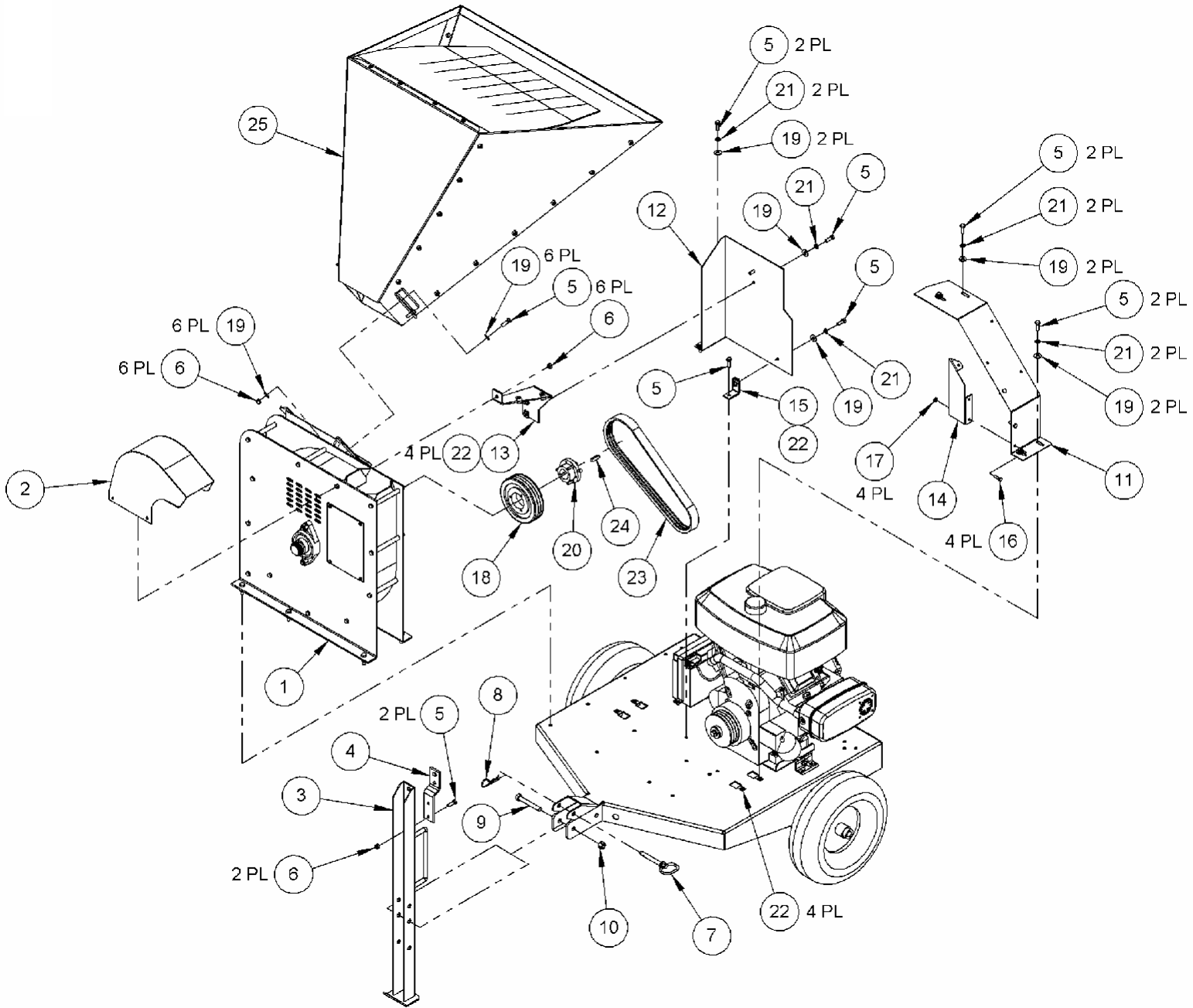
<u>Ref#</u>	<u>Part#</u>	<u>Description</u>
01	930-3201	Chipper Basic Assembly
02	930-2113	Discharge Weldment
03	930-2116	Tongue Weldment, Non Highway
04	913-0008	Plate, Hitch
05	090-0088	Bolt, 5/16-18 X 1", GR 5
06	090-0460	Nut, Nylon lock, 5/16-18
07	090-0728	Pin, Tongue, 1/2"
08	706-0924	Cotter Pin
09	090-0133	Bolt, 1/2-13 x 3-1/2", GR 5
10	090-0629	Nut, Nylon Lock, 1/2-13
11	930-2080	Guard, Belt
12	930-2081	Guard, Belt
13	930-3049	Bracket, Guard Belt
14	930-2082	Cover, Front
15	930-1018	Bracket
16	090-0060	Bolt, 1/4"-20 x 1", GR 5
17	090-0070	Nut, Nylon Lock, 1/4-20
18	030-0534	Sheave, 3 Groove
19	090-0233	Washer, Flat, 5/16"
20	030-0535	Bushing, 1-3/8"

<u>Ref#</u>	<u>Part#</u>	<u>Description</u>
21	090-0394	Washer, Lock, Split, 5/16"
22	090-0438	Nut, "J", Plain, 5/16-18
23	030-0553	Belt, Banded, 3 Groove
24	090-0726	Key, Shaft, 5/16 X 1-1/4"
25	930-3206	Hopper Assembly

## Safety & Information Labels

930-0011	Label, Danger, Rotating Knife and Flywheel
930-0004	Label, Warning, Rotating Parts
091-0043	Label, Warning, Check Oil
930-0010	Label, Warning, High Speed Discharge
930-0008	Label, Danger, 10 mph

Schematic - Chipper



## Parts List - Chipper

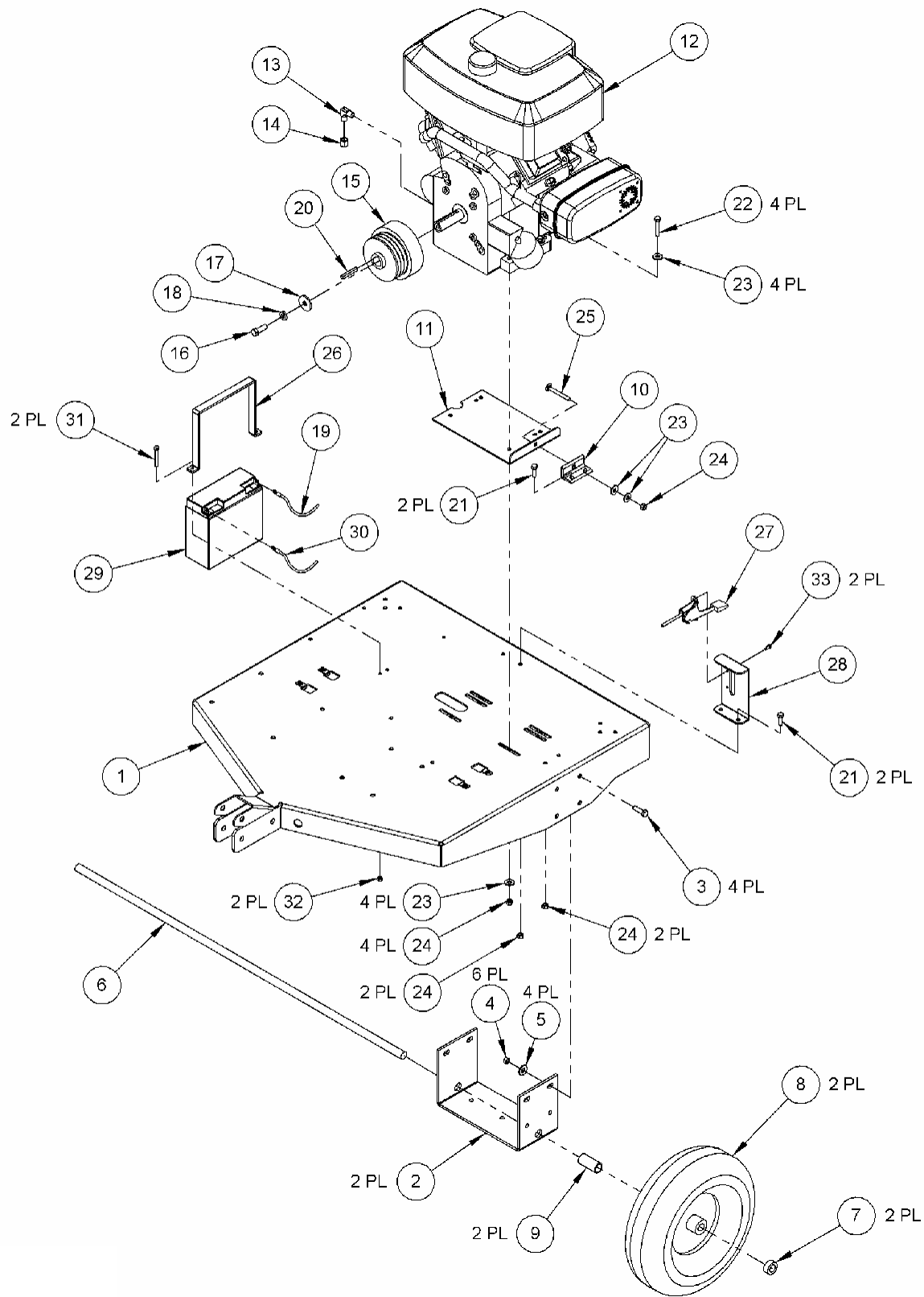
<u>Ref#</u>	<u>Part#</u>	<u>Description</u>
01	930-2106	Base Weldment
02	930-2045	Bracket, Axle
03	090-0121	Bolt, 3/8-16 X 1-1/4", GR 5
04	090-0461	Nut, Nylon Lock, 3/8-16
05	090-0234	Washer
06	930-2032	Axle, 3/4" OD
07	090-0730	Collar, Locking, 3/4" ID
08	030-0548	Wheel, Pneumatic, 5.3/4.5-6
09	930-2033	Spacer, Wheel, 1" OD
10	930-1042	Bracket, Tension, Belt
11	930-2041	Plate, Engine
12	030-0655	Engine, 16 HP Vanguard W/ Side Muffler Loose
13	030-0558	Elbow, 90 DEG, 3/8" NPT
14	030-0543	Cap, Pipe, Hex Head, 3/8" NPT
15	030-0539	Clutch, 3V, 3Groove
16	090-0153	Bolt, 7/16-20 X 1-1/4", GR 8
17	090-0709	Washer 1.5 OD, .453 ID, .156 Thick
18	090-0230	Washer, Lock, Split, 7/16"
19	030-0554	Cable, Battery, Positive
20	703-0424	Key, Shaft, 1/4" SQ X 2.0"

<u>Ref#</u>	<u>Part#</u>	<u>Description</u>
21	090-0088	Bolt, 5/16-18 X 1", GR5
22	090-0091	Bolt, 5/16-18 X 1-3/4", GR5
23	090-0233	Washer, Flat, 5/16"
24	090-0460	Nut, Nylon Lock, 5/16-18
25	090-0410	Bolt, Carriage, 5/16-18 X 3"
26	930-3053	Bracket, Battery
27	030-0544	Cable, Control, Throttle
28	930-2085	Panel, Control, Throttle
29	911-0250	Battery, Gel-Filled
30	913-0429	Cable, Battery, Negative
31	090-0014	Bolt, 1/4"-20 X 2" GR 5
32	090-0470	Nut, Nylon Lock, 1/4-20
33	090-0504	Bolt, Self Tapping, 10-24 X

### Safety & Information Labels

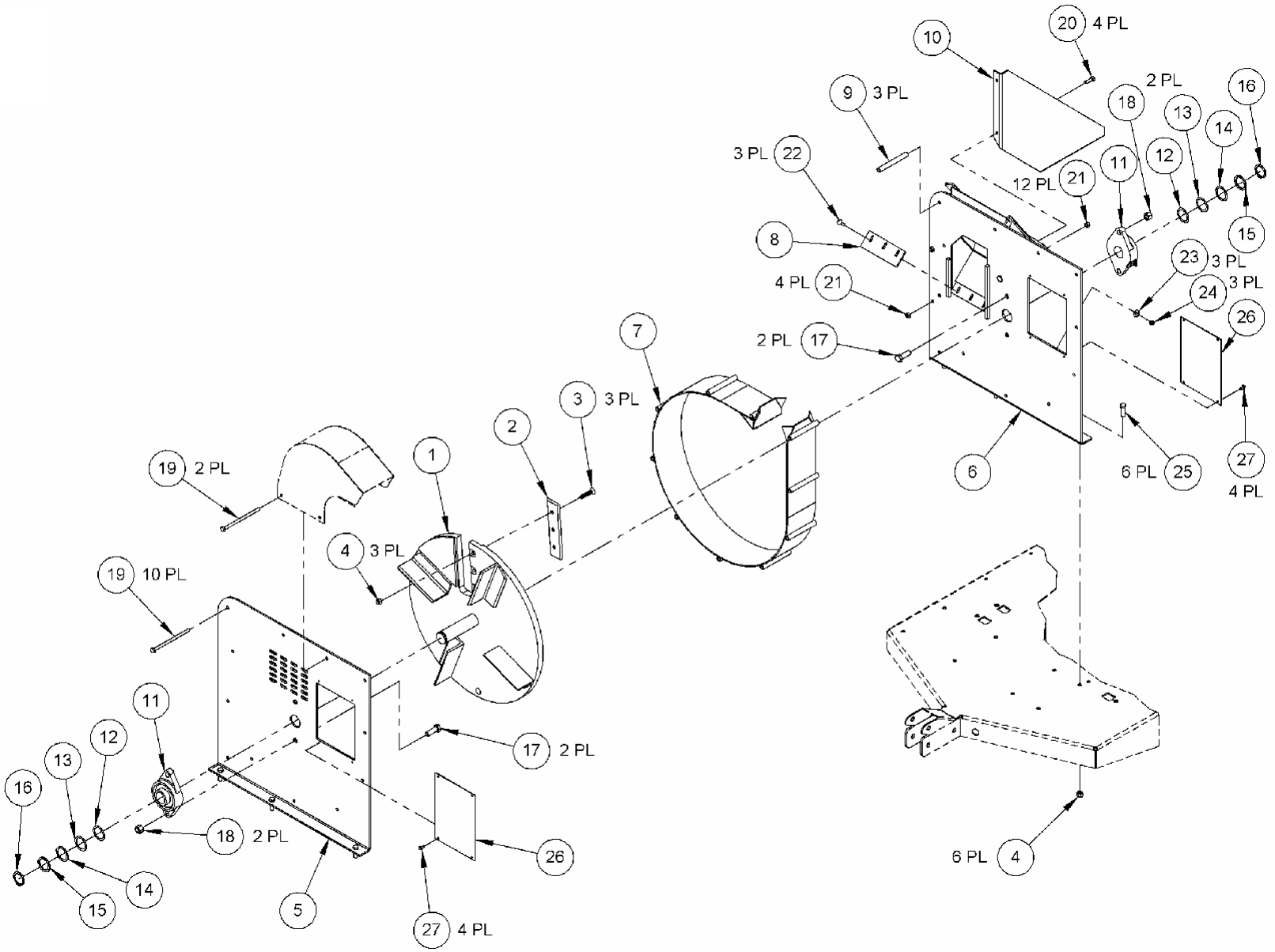
930-0014	Label, Warning, Do Not Climb
091-0043	Label, Warning, Check Oil
930-0002	Label, Danger, Read Operators Manual
930-0007	Label, Warning, Burn Hazard
930-0006	Label, Warning, Avoid Electric Shock
091-0062	Label, USA
930-0021	Label, On/Off/Start

# Schematic - Chipper



**Parts List – Chipper Basic**

<u>Ref#</u>	<u>Part#</u>	<u>Description</u>	<u>Ref#</u>	<u>Part#</u>	<u>Description</u>
01	930-3250	Flywheel	19	090-0716	Bolt, 5/16-18 X 5-1/4", GR 5
02	930-3003	Knife	20	090-0088	Bolt, 5/16-18 X 1", GR 5
03	090-0526	Screw, 3/8-16 X 1-3/4", FHSCS, GR 8	21	090-0460	Nut, Nylon Lock, 5/16-18
04	090-0461	Nut, Nylon Lock, 3/8-16	22	090-0677	Bolt, Carriage, 1/4-20 X 1"
05	930-3011	Sideplate, Vent	23	090-0245	Washer, Flat, 1/4"
06	930-3102	Sideplate Weldment, Chute	24	090-0470	Nut, Nylon Lock, 1/4-20
07	930-3107	Scroll Weldment	25	090-0121	Bolt, 3/8-16 X 1-1/4", GR 5
08	930-3023	Plate, Wear	26	930-2012	Cover, Access
09	930-2017	Tube, Scroll	27	090-0162	Screw, Self Tapping, 10-32 X 3/8"
10	930-2027	Brace, Basic			
11	030-0533	Bearing, 2 Bolt, 1-3/8"			
12	090-0721	Shim, Shaft, 1-3/8", .025" Thick (as needed)	<b><u>Not Illustrated</u></b>		
13	090-0722	Shim, Shaft, 1-3/8" .050" Thick (as needed)	930-3005		Knife Kit
14	090-0723	Shim, Shaft, 1-3/8" .075" Thick (as needed)	030-0384		Gauge, Knife Gap
15	090-0724	Shim, Shaft, 1-3/8" .125" Thick (as needed)	<b><u>Safety &amp; Information Labels</u></b>		
16	090-0725	Ring, Retaining, 1-3/8"	930-0009		Label, Warning, Rotating Parts Inside
17	090-0141	Bolt, 1/2-13 X 1-1/2", GR 5	930-0001		Label, Warning, Rotating Knife and Flywheel
18	090-0629	Nut, Nylon Lock, 1/2-13	912-2615		Label, MacKissic Inc.
			030-0390		Label, Merry Commercial



## ***Parts List – Hopper Assembly***

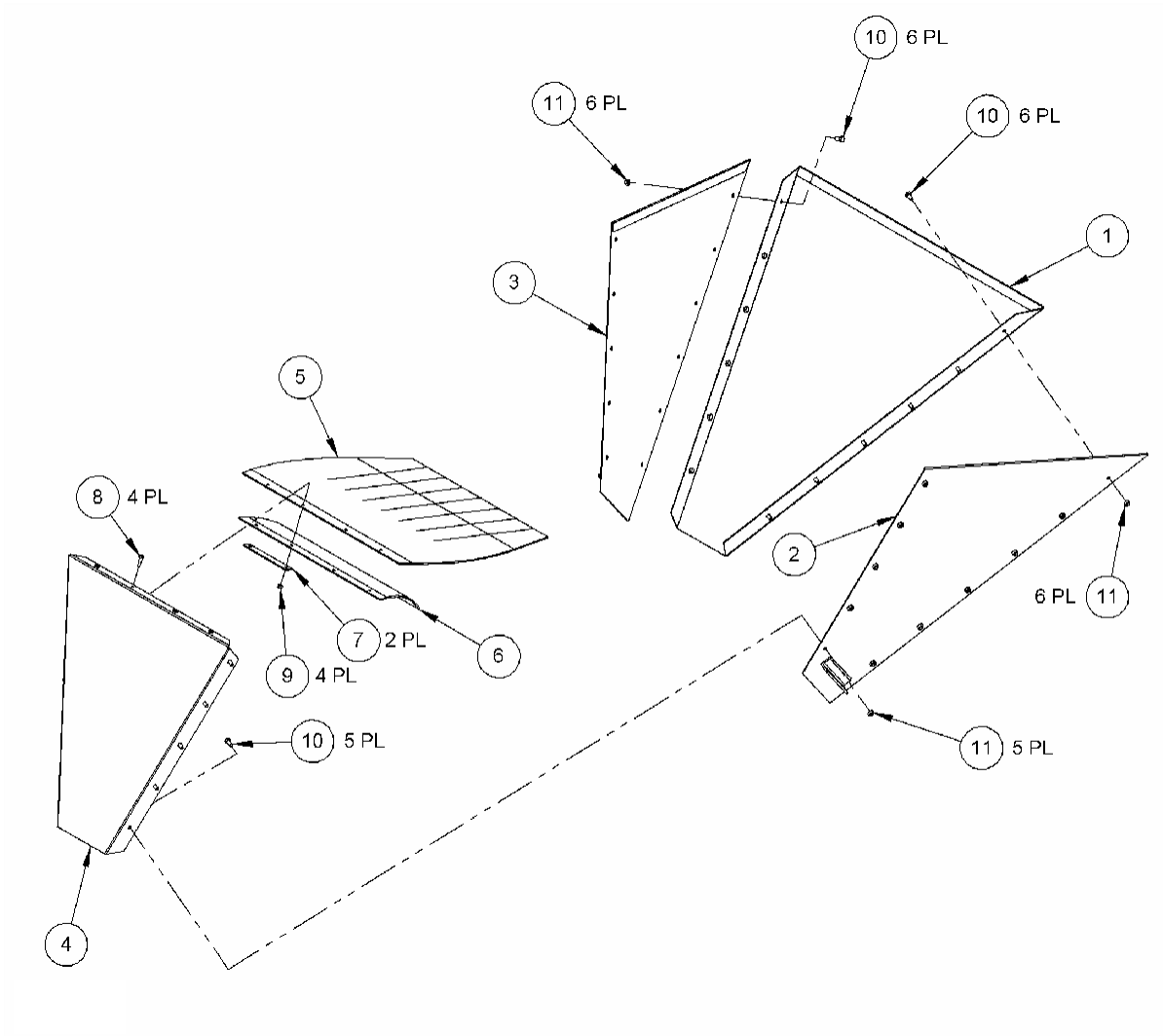
<u>Ref#</u>	<u>Part#</u>	<u>Description</u>
01	930-3110	Hopper Weldment, Bottom
02	930-3111	Hopper Weldment, Left
03	930-3112	Hopper Weldment, Right
04	930-3062	Hopper, Top
05	930-3071	Shield, Blow-Back
06	030-0541	Support, Blow-Back
07	930-1073	Bracket, Guard
08	090-0060	Bolt, 1/4"-20 X 1", GR 5
09	090-0470	Nut, Nylon Lock, 1/4-20

<u>Ref#</u>	<u>Part#</u>	<u>Description</u>
10	090-0731	Bolt, Philips Head, 5/16-18 X 5/8", GR 5
11	090-0460	Nut, Nylon Lock, Thin, 5/16-18

### Safety & Information Labels

930-0013 Label, Danger, Avoid Death

# Schematic – Hopper Assembly





## **Parts List – Accessories**

### **ROAD-TOW PACKAGE**

<u>Ref#</u>	<u>Part#</u>	<u>Description</u>
01	930-2117	Tongue Weldment, Highway
02	913-0218	Hitch, Trailer
03	408-0078	Chain, Safety, Class 1
04	090-0123	Bolt, 1/2-13 X 3-1/2", GR 5
05	090-0629	Nut, Nylon Lock, 1/2-13
06	090-0123	Bolt, 3/8-16 X 3-1/2", GR 5
07	090-0461	Nut, Nylon Lock, 3/8-16
08	090-0234	Washer, Flat, 3/8"
09	930-2121	Axle Weldment, Highway
10	930-2122	Fender Weldment
11	030-0549	Wheel & Tire Assembly, w/hub
15	090-0121	Bolt, 3/8-16 x 1-1/4", GR 5

### **EXTENDED TOP-DISCHARGE CHUTE**

<u>Ref#</u>	<u>Part#</u>	<u>Description</u>
18	930-2077	Flange, Side
19	930-2078	Plate, Bottom
20	930-2118	Swivel Weldment
21	930-2119	Top Discharge Weldment
22	930-2120	Deflector Weldment
23	090-0088	Bolt, Carriage, 5/16-18 X 1", GR5
24	090-0233	Washer, Flat, 5/16"
25	090-0460	Nut, Nylon Lock, 5/16-18
26	090-0060	Bolt, 1/4-20 X 1", GR 5
27	090-0070	Nut, Nylon Lock, 1/4-20
28	708-3211	Pin, Locking
29	709-0924	Hitch Clip
30	930-2064	Swivel Top, Pin Side
31	930-2065	Swivel Top
32	930-2063	Spacer, Swivel

### **Safety & Information Labels**

930-0003	Label, Danger, 45 mph
930-0014	Label, Warning, Do Not Climb
930-0010	Label, Warning, High Speed Discharge
930-0011	Label, Danger, Rotating Knife and Flywheel

# Schematic – Accessories

