

Chapter 7: Parts List and Schematic Diagrams

Parts List – Drive Assembly

Note: Part numbers listed are available through MacKissic. Ref#

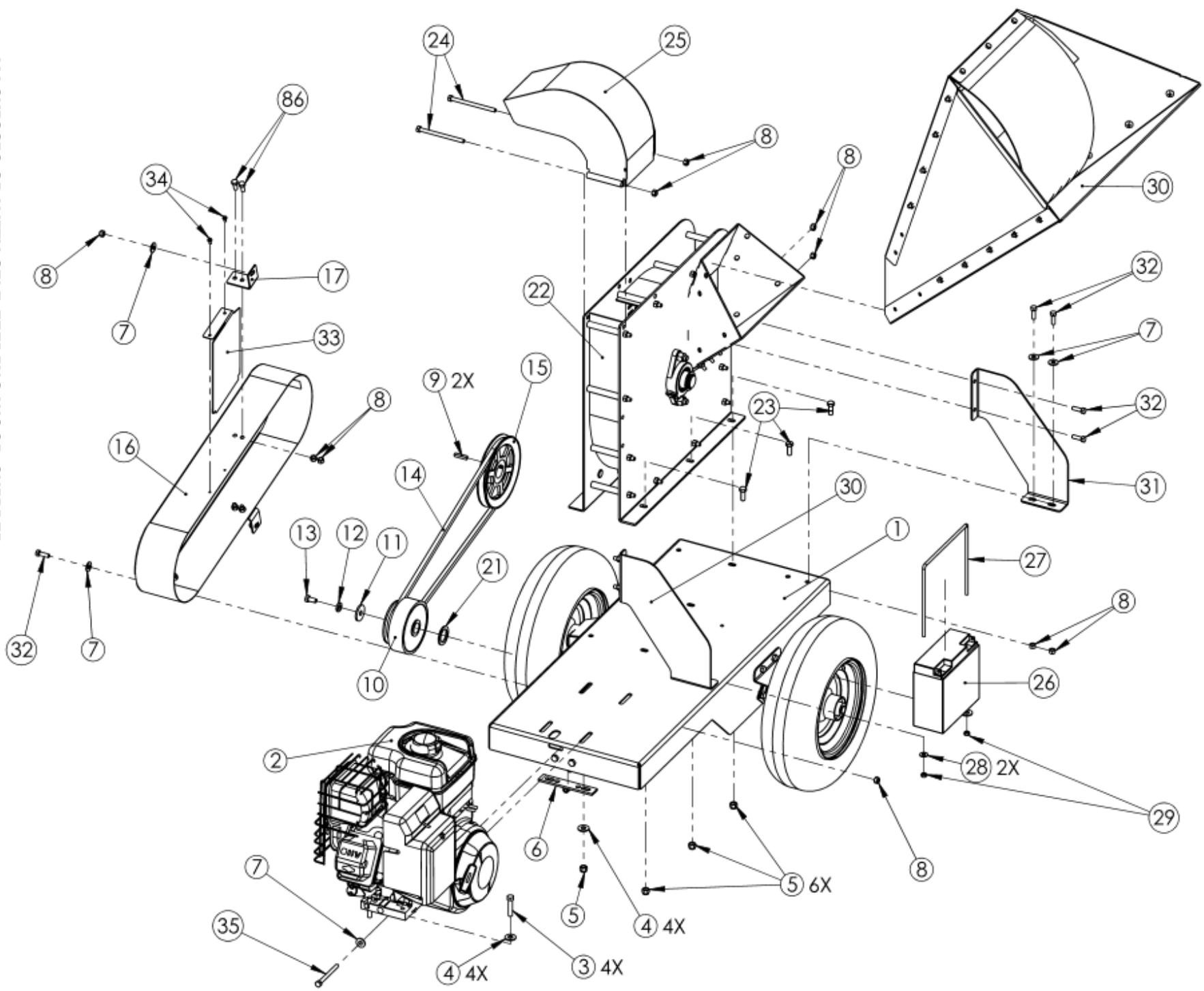
Part# Description

1	950-2106-BL	Base, (WC475)
	950-3106-BL	Base, (WC575E)
2	030-0603	Engine, B&S, WC475 TQ, M/S
	030-0602	Engine, B&S, WC475 TQ, E/S
	030-0607	Engine, B&S, WC575E TQ, E/S
3	090-0113	Bolt, HCS, 3/8-16 x 1-3/4, Gr5
4	090-0234	Washer, Flat, 3/8
5	090-0461	Nut, Nylon Lock, 3/8-16
6	900-0360	Belt Tensioner
7	090-0233	Washer, Flat, 5/16
8	090-0460	Nut, Nylon Lock, 5/16-18
9	080-0080	Key, 1/4" x 1/4" x 2"
10	030-0611	Clutch, 1 Groove, (WC475)
	030-0612	Clutch, 2 Groove, (WC575E)
11	090-0709	Washer, .47 ID X OD X .15 Thk
12	090-0230	Washer, Lock, 7/16, Split
13	090-0153	Bolt, HCS 7/16-20 x 1-1/4, Gr8
14	030-0616	Belt, 5L550, (WC475)
	030-0617	Belt, 5L640, (WC575E)
15	030-0609	Pulley, 1 Groove, (WC475)
	030-0626	Sheave, 2 Groove, (WC575E)
	030-0624	Bushing, Sheave (WC575E)
16	940-2094	Belt Guard Assembly, (WC475)
	940-3094	Belt Guard Assembly, (WC575E)
17	940-1019	Bracket, Belt Guard, (WC475)
	940-3019	Bracket, Belt Guard, Upper, (WC575E)
18	940-1019	Bracket, Belt Guard, (WC475)
	940-3020	Bracket, Belt Guard, Lower, (WC575E)
19	940-1019-BL	Bracket, Belt Guard, (WC475)
	940-3021-BL	Bracket, Belt Guard, Base, (WC575E)

Ref#	Part#	Description
20	090-0066	Bolt, HCS, 5/16-18 x 3/4
21	090-0720	Shim, Shaft, 1/-1/4, .125 Thk
	030-0452	Shim, Shaft, 1/-1/4, .075 Thk
	030-0451	Shim, Shaft, 1/-1/4, .050 Thk
	030-0450	Shim, Shaft, 1/-1/4, .025 Thk
22	950-2201	Chipper Basic Assembly, (WC475)
	950-3201	Chipper Basic Assembly, (WC575E)
23	090-0110	Bolt, HCS, 3/8-16 x 1, Gr5
24	090-0702	Bolt, HCS, 5/16-18 x 4-1/2, Gr5
25	950-2113-GR	Discharge
26	030-0244	Battery, 12V, 7.2AH (WC475E)
	911-0250	Battery, SLA, 12V, 17AH (WC575E)
27	930-2086	Strap, Battery, Rod (WC475E)
	930-3086	Strap, Battery, Rod (WC575E)
28	090-0245	Washer, Flat, 1/4
29	090-0470	Nut, Nylon Lock, 1/4-20
30	950-2206	Hopper Assembly, (WC475)
	950-3206	Hopper Assembly, (WC575E)
31	940-2016L-GR	Arm, Bolt On, LH, (WC475)
	940-3016L-GR	Arm, Bolt On, LH, (WC575E)
32	940-2016R-GR	Arm, Bolt On, RH, (WC475)
	940-3016R-GR	Arm, Bolt On, RH, (WC575E)
33	090-0088	Bolt, HCS, 5/16-18 X 1"
34	940-1096-BL	Guard, Belt, Inner
35	090-0162	Screw, Self-Tapping, 10-32 X 3/8"

Not Shown

091-0043	Label, Check Oil
930-0002	Label, Danger, Read Manual
930-0004	Label, Danger, Rotating Parts
930-0010	Label, Warning, High Speed Discharge
930-0011	Label, Danger, Rotating Knife & Flywheel
930-0014	Label, Warning, Do Not Climb
805-0329	Cable, Battery, Positive (WC475E)
030-0619	Cable, Battery, Positive (WC575E)
805-0330	Cable, Battery, Negative (WC475E)
030-0620	Cable, Battery, Negative (WC575E)

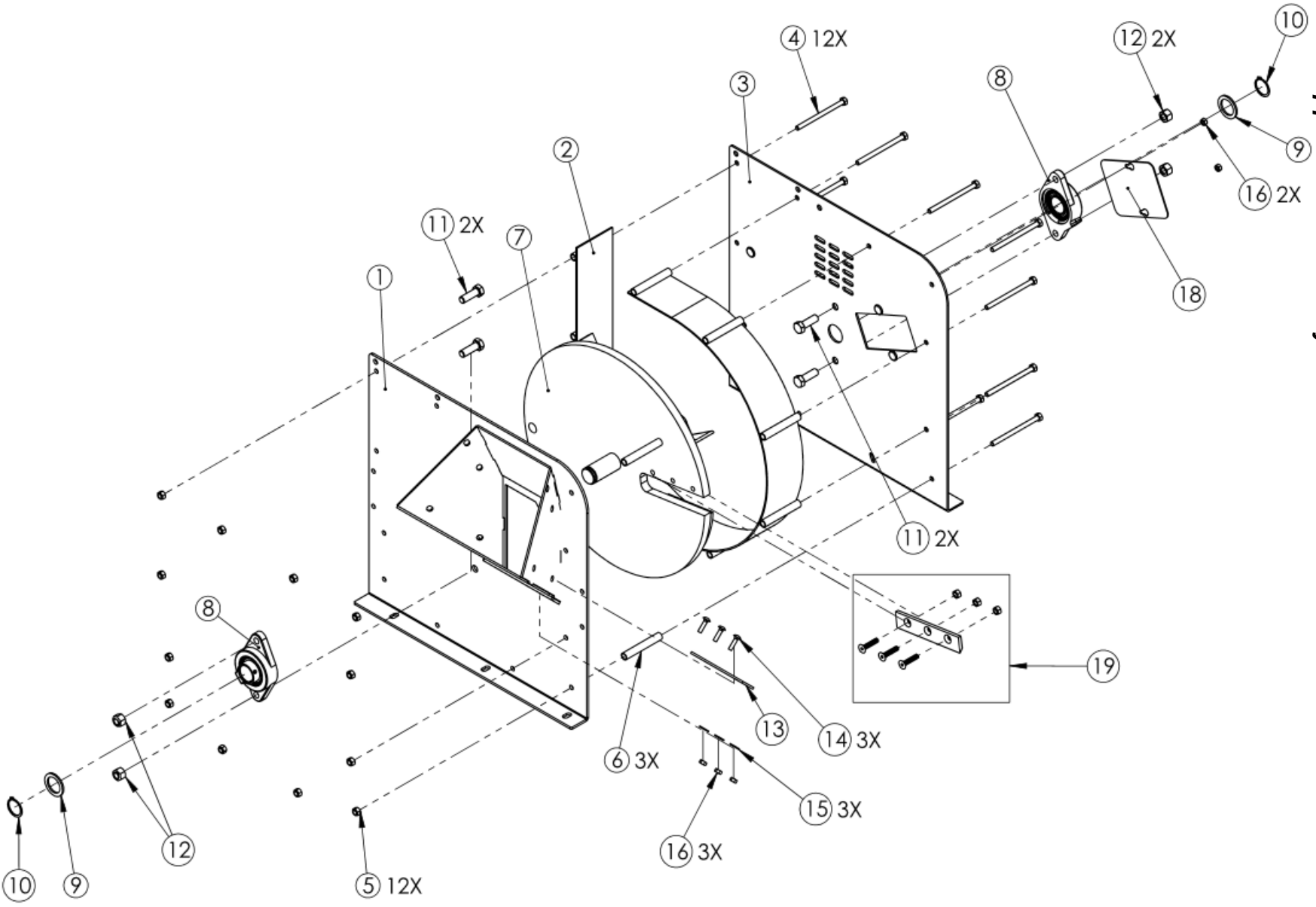


Parts List - Chipper Basic Assembly

Note: Part numbers listed are available through MacKissic.

<u>Ref#</u>	<u>Part#</u>	<u>Description</u>	<u>Ref#</u>	<u>Part#</u>	<u>Description</u>
1	950-2104-GR	Sideplate Weldment, Chute (WC475)	11	090-0141	Bolt, HCS, 1/2-13 x 1-1/2, Gr5
	950-3104-GR	Sideplate Weldment, Chute (WC575E)	12	090-0050	Nut, Lock, 1/2-13, Gripco
2	940-2107-GR	Scroll Weldment, (WC475)	13	940-2023	Plate, Wear, (WC475)
	950-3107-GR	Scroll Weldment, (WC575E)		940-3023	Plate, Wear, (WC575E)
3	950-2103-GR	Sideplate Weldment, Vent, (WC475)	14	090-0677	Bolt, Carriage, 1/4-20 x1
	950-3103-GR	Sideplate Weldment, Vent, (WC575E)	15	090-0245	Washer, Flat, 1/4
4	090-0702	Bolt, HCS, 5/16-18 x 4-1/2, Gr5	16	090-0470	Nut, Nylon Lock, 1/4-20
5	090-0048	Nut, Lock, 5/16-18, Gripco	17	940 -2046-GR	Plate, Access, 3 Hole, (WC475)
6	940-2017-GR	Tube, Scroll		940-3046-GR	Plate, Access, 3 Hole, (WC575E)
7	940-2250	Flywheel, Balanced w/Knife, (WC475)	18	940-2012-GR	Plate, Access, 2 Hole, (WC475)
	940-3250	Flywheel, Balanced w/ Knife, (WC575E)		940-3012-GR	Plate, Access, 2 Hole, (WC575E)
8	030-0530	Bearing, Flange, 1-1/4" Shaft	19	940-2005	Knife Kit, (WC475)
9*	090-0720	Shim, Shaft, 1/-1/4, .125 Thk		940-3005	Knife Kit, (WC575E)
	030-0452	Shim, Shaft, 1/-1/4, .075Thk	<u>Not Shown</u>		
	030-0451	Shim, Shaft, 1/-1/4, .050Thk	930-0001	Label, Warning, Rotating Knife	
	030-0450	Shim, Shaft, 1/-1/4 .025Thk	930-0009	Label, Danger, Rotating Parts Inside	
10	030-0449	Ring, Retaining, 1-1/4 Shaft			

Schematic – Chipper Basic Assembly

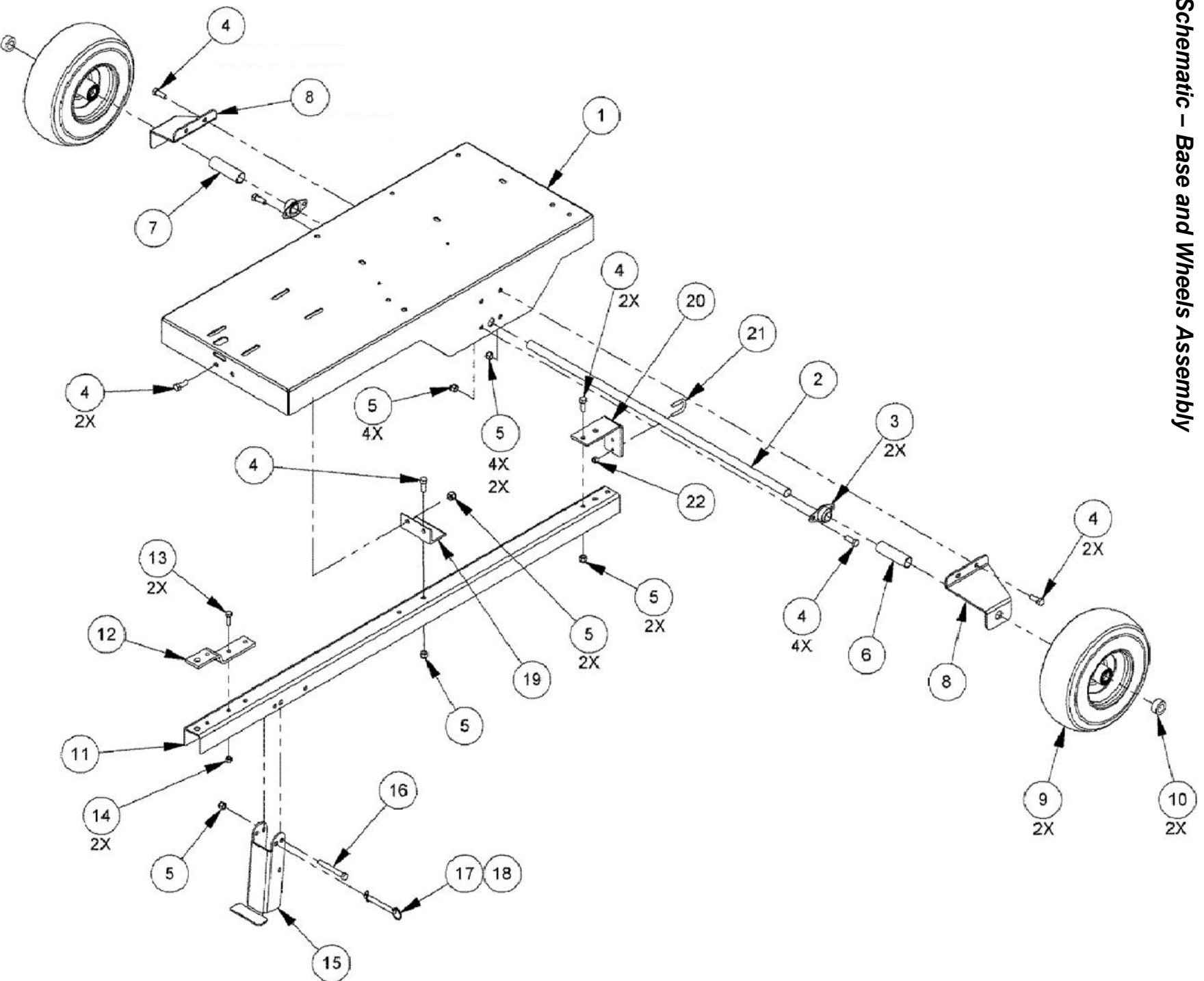


Parts List– Base and Wheels Assembly

Note: Part numbers listed are available through MacKissic.

<u>Ref#</u>	<u>Part#</u>	<u>Description</u>	<u>Ref#</u>	<u>Part#</u>	<u>Description</u>
1	950-2106-BL	Base, (WC475)	11	940-2043-BL	Tow Bar
	950-3106-BL	Base, (WC575E)	12	913-0008-BL	Hitch Plate, Tow Bar
2	940-2032-BL	Axle, (WC475)	13	090-0088	Bolt, 5/16-18 x 1, Gr5
	940-3032-BL	Axle, (WC575E)	14	090-0460	Nut, Nylon Locks, 5/16-18
3	030-0618	Bearing Flange, Axle	15	940-2031-BL	Leg, Support, (WC475)
4	090-0110	Bolt, HCS, 3/8-16 x 1, Gr5	16	090-0116	Bolt, HCS, 3/8-16 x 3, Gr5
5	090-0461	Nut, Nylon Lock, 3/8-16	17	090-0749	Pin, Clevis w/Ring
6	940-2033	Spacer, Wheel, (WC475)	18	706-0924	Pin, Cotter, 1/8"
	940-3033	Spacer, Wheel, Long (WC575E)	19	940-2021-BL	Bracket, Tow Bar, Front
7	940-2033	Spacer, Wheel, (WC475)	20	940-2018-BL	Bracket, Tow Bar, Rear
	940-3036	Spacer, Wheel, Short (WC575E)	21	090-0610	U Bolt
8	940-2047	Support, Axle, (WC475)	22	090-0470	Nut, Nylon Lock, 1/4-20
	940-3047	Support, Axle, (WC575E) (QTY=1)			<u>Not Shown</u>
9	030-0642	Wheel, 4.10/3.50-6	930-0002		Label, Danger, Read Manual
10	090-0730	Collar, Locking, 3/4" Shaft	930-0008		Label, Danger, 10 mph
			930-0014		Label, Warning, Do Not Climb

Schematic – Base and Wheels Assembly



Parts List– Base and Wheels Assembly– Road Tow

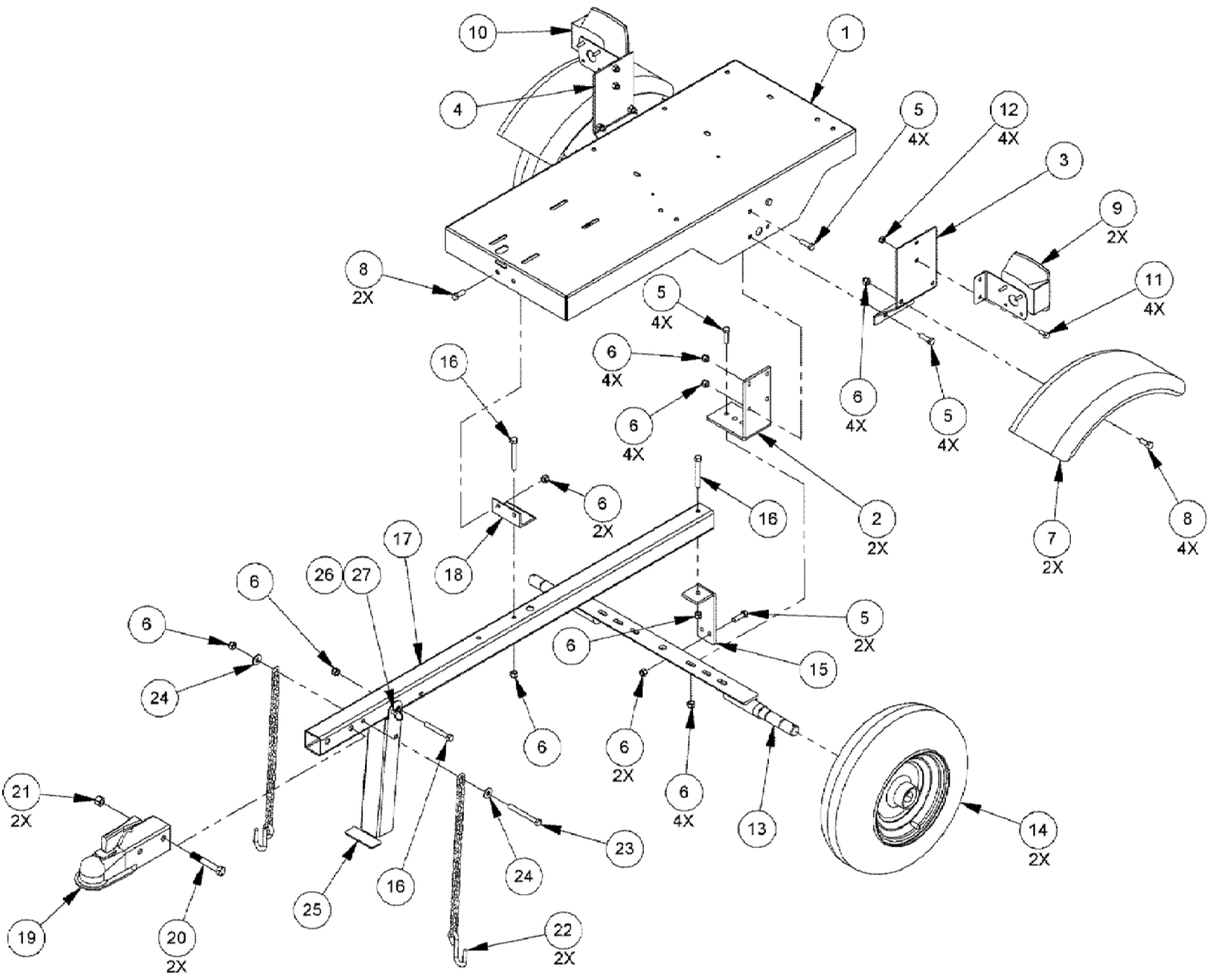
Note: Part numbers listed are available through MacKissic.

<u>Ref#</u>	<u>Part#</u>	<u>Description</u>	<u>Ref#</u>	<u>Part#</u>	<u>Description</u>
1	950-2106-BL	Base, (WC475)	16	090-0116	Bolt, HCS, 3/8-16 x 3, Gr5
	950-3106-BL	Base, (WC575E)	17	940-2024-BL	Tow Bar, Road Tow
2	940-2019-BL	Bracket, Axle	18	940-2021-BL	Bracket, Tow Bar, Front
3	940-2025L-BL	Bracket, Fender, (WC475)	19	913-0218	Hitch, Trailer
	940-3025-BL	Bracket, Fender, (WC575E)	20	090-0370	Bolt, HCS, 1/2-13 x 3, Gr5
4	940-2025R-BL	Bracket, Fender, RH, (WC475)	21	090-0629	Nut, Nylon Lock, 1/2-13
	940-3025-BL	Bracket, Fender, (WC575E)	22	912-3522	Chain, Safety, Class 1
5	090-0111	Bolt, HCS, 3/8-16 x 1-1/4, Gr5	23	090-0123	Bolt, HCS, 3/8-16 x 3-1/2, Gr5
6	090-0461	Nut, Nylon Lock, 3/8-16	24	090-0234	Washer, Flat, 3/8
7	930-2122-BL	Fender	25	940-2042-BL	Leg, Support, Road Tow
8	090-0110	Bolt, HCS, 3/8-16 x 1, Gr5	26	090-0749	Clevis Pin w/Ring
9	030-0266	Light, Stop, Road Side	27	706-0924	Pin, Cotter, 1/8"
10	030-0265	Light, Stop, Curb Side			
11	090-0066	Bolt, HCS, 5/16-18 x 3/4			
12	090-0460	Nut, Nylon Lock, 5/16-18			
13	900-0250-BL	Axle Weldment, Road Tow			
14	702-0040	Wheel & Tire Assembly, w/Hub			
15	940-2020-BL	Bracket, Tow Bar, Rear			

Not Shown

930-0002	Label, Danger, Read Manual
930-0003	Label, Danger, 45 mph
930-0014	Label, Warning, Do Not Climb
030-0267	Wire Harness, 10ft

Schematic – Base and Wheels Assembly – Road Tow

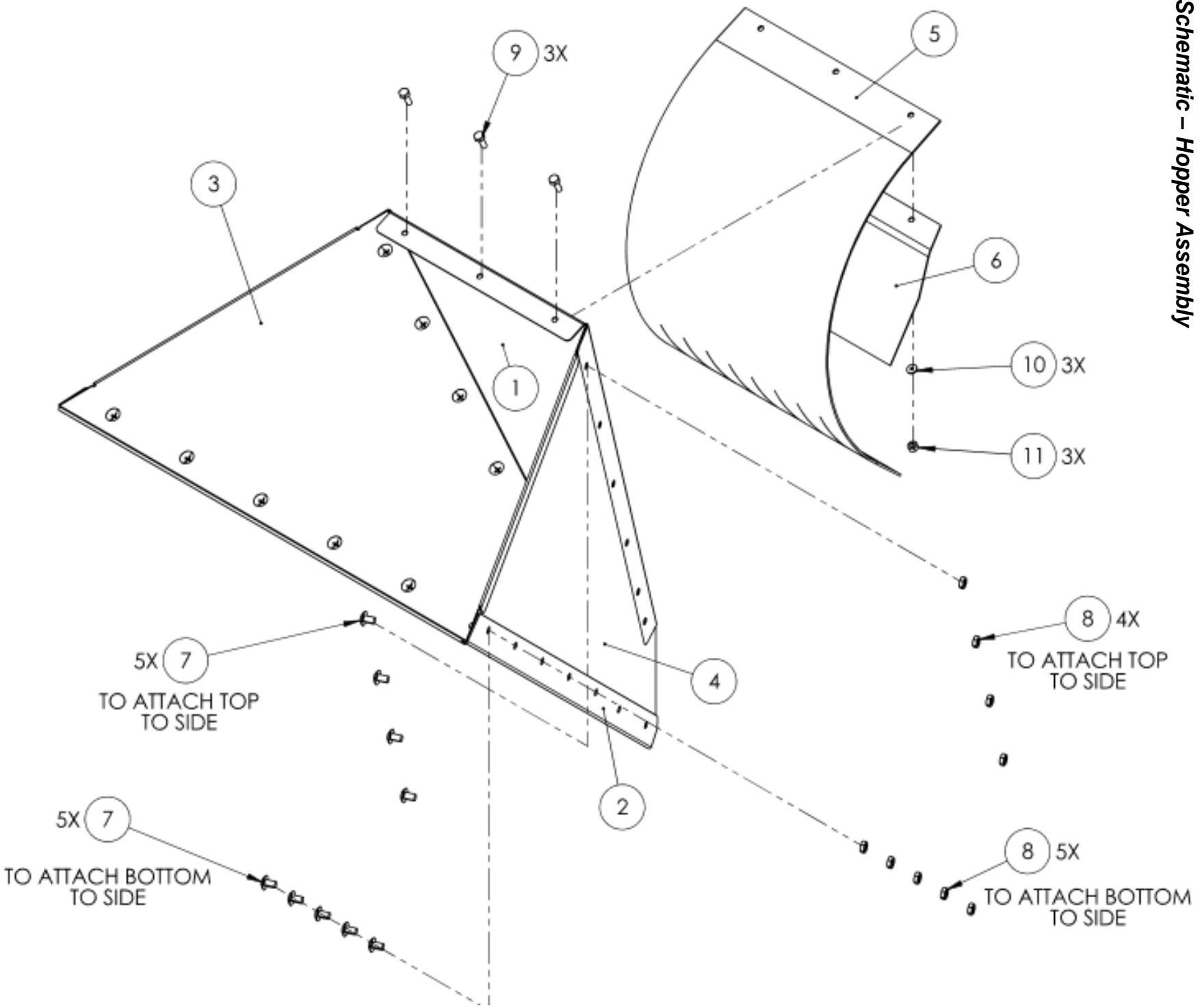


Parts List – Hopper Assembly

Note: Part numbers listed are available through MacKissic.

<u>Ref#</u>	<u>Part#</u>	<u>Description</u>	<u>Ref#</u>	<u>Part#</u>	<u>Description</u>
1	940-2080-GR	Hopper, Top, (WC475)	7	090-0639	Nut, Nylon Lock, 5/16-18, LP
	950-3080-GR	Hopper, Top, (WC575E)	8	940-2071	Shield, Blow Back, (WC475)
2	940-2081-GR	Hopper, Bottom, (WC475)		940-3071	Shield, Blow Back, (WC575E)
	950-3081-GR	Hopper, Bottom, (WC575E)	9	940-0543	Support, Blow Back, (WC475)
3	940-2082L-GR	Hopper, Side, LH, (WC475)		940-0542	Support, Blow Back, (WC575E)
	950-3082L-GR	Hopper, Side, LH, (WC575E)	10	090-0012	Bolt, HCS, 1/4-20 x 3/4, Gr5
4	940-2082R-GR	Hopper, Side, RH, (WC475)	11	090-0232	Washer, Flat, 1/4
	950-3082R-GR	Hopper, Side, RH, (WC575E)	12	090-0470	Nut, Nylon Lock, 1/4-20
5	090-0748	Bolt, Philips Head, 5/16-18 x 3/4"	<u>Not Shown</u>		
6	090-0731	Bolt, Philips Head, 5/16-18 x 1/2"		930-0013	Label, Danger, Safety

Schematic – Hopper Assembly



Parts List – High Discharge Accessory

NOTE: Part numbers listed are available through MacKissic.

Ref#	Part#	Description
01	930-2120-GR	Deflector Weldment
02	090-0066	Bolt, HCS, 5/16-18 x 3/4"
03	090-0476	SAE Washer, Flat, 5/16
04	090-0460	Nut, Nylon Lock, 5/16-18
05	930-2119	High Discharge Weldment
06	708-3211	Pin, Locking
07	090-0060	Bolt, HCS, 1/4-20 X 1, Gr5
08	930-2064-GR	Swivel Top, Pin Side
09	930-2063-GR	Spacer, Swivel
10	940-2077-GR	Flange, Side, HD

Ref#	Part#	Description
11	090-0470	Nut, Nylon Lock, 1/4-20
12	706-0924	Hair Spring Cotter
13	940-2078-GR	Plate, Bottom
14	930-2118-GR	Swivel Weldment
15	930-2065-GR	Swivel Top

Not Shown

930-0010 Label, Warning, High Speed Discharge

930-0011 Label, Danger, Rotating Knife & Flywheel

