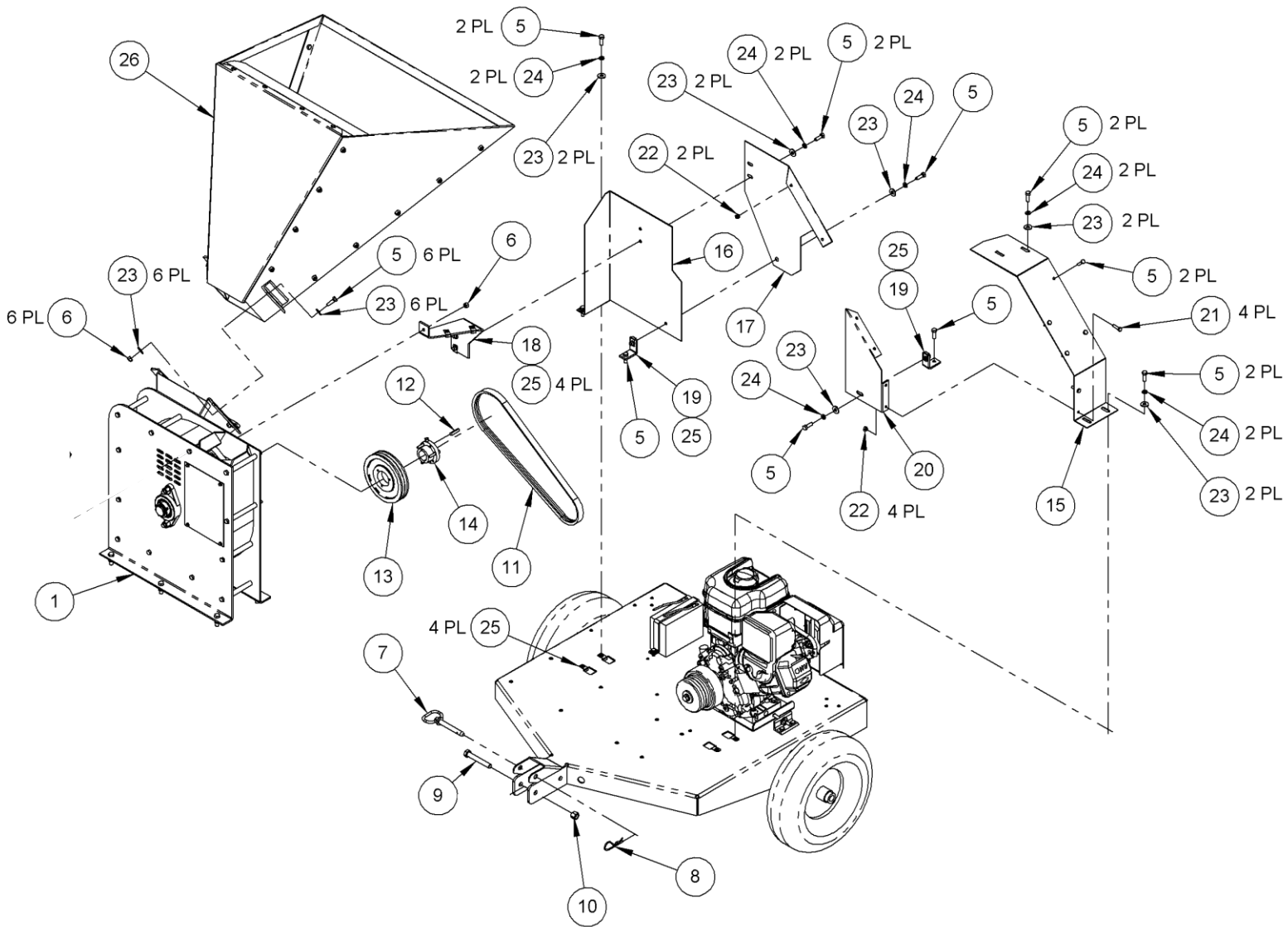




Schematic - CHIPPER



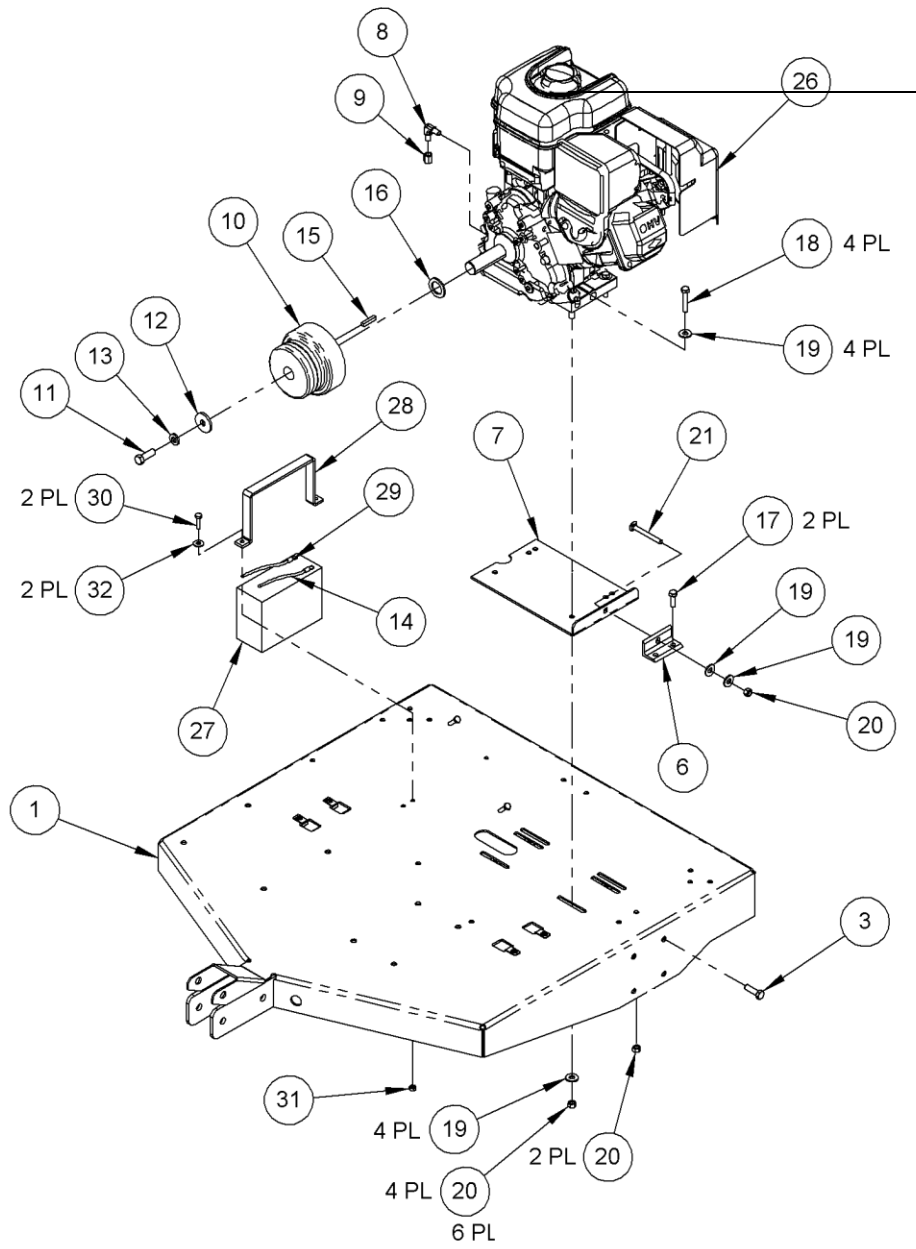
<u>Ref#</u>	<u>Part#</u>	<u>Description</u>
01	930-2106	Base Weldment
06	930-1042	Bracket, Tension, Belt
07	930-2041	Plate, Engine
08	030-0557	Elbow, 90 DEG, 1/4" NPT
09	030-0542	Cap, Pipe, Hex Head, 1/4" NPT
10	030-0538	Clutch, 3V, 2 Groove
11	090-0153	Bolt, 7/16-20 X1-1/4", GR8
12	090-0709	Washer, 1.5 OD x .453 ID x .156 Thick
13	090-0230	Washer, Lock, Split, 7/16"
14	030-0554	Cable, Battery, Positive
15	080-0081	Key, Shaft, 1/4" SQ X 1-1/4"
16	090-0024-4	Spacer, Clutch
17	090-0088	Bolt, 5/16-18 X 1", GR 5
18	090-0091	Bolt, 5/16-18 X 1-3/4", GR5
19	090-0233	Washer, Flat, 5/16"
20	090-0460	Nut, Nylon Lock, 5/16-18

<u>Ref#</u>	<u>Part#</u>	<u>Description</u>
21	090-0410	Bolt Carriage, 5/16-18 X 3"
26	030-0655	Engine, Briggs and Stratton, 16 HP Vanguard
26	030-0656	Engine, Honda, GX390
27	030-0350	Battery, Gel-Filled
28	930-2054	Hold Down, Battery
29	030-0555	Cable, Battery, Negative
30	090-0060	Bolt, 1/4"-20 X 1", GR 5
31	090-0470	Nut, Nylon Lock, 1/4-20
32	090-0245	Washer, Flat, 1/4"

**Safety & Information Labels**

930-0014	Label, Warning, Do Not Climb
091-0043	Label, Warning, Check Oil
930-0002	Label, Danger, Read Operators Manual
930-0006	Label, Warning, Avoid Electric Shock
091-0062	Label, USA

# Schematic - CHIPPER



## Parts List – Chipper Basic

Ref#	Part#	Description
------	-------	-------------

01	090-0526	Screw, 3/8-16 X 1-3/4", FHSCS, GR 8
02	090-0461	Nut, Nylon Lock, 3/8-16
03	930-2003	Knife
04	930-2250	Flywheel
05	930-2011	Sideplate, Vent
06	930-2102	Sideplate Weldment, Chute
07	930-2107	Scroll Weldment
08	930-2023	Plate, Wear
09	930-2027	Brace, Basic
10	930-2017	Tube, Scroll, 1/4"
11	030-0530	Bearing, 2 Bolt, 1-1/4"
12	030-0450	Shim, Shaft, 1-1/4", .025" Thick (as needed)
13	030-0451	Shim, Shaft, 1-1/4", .050" Thick (as needed)
14	030-0452	Shim, Shaft, 1-1/4", .075" Thick (as needed)
15	090-0720	Shim, Shaft, 1-1/4", .125" Thick (as needed)

16	030-0449	Ring, Retaining, 1-1/4"
17	090-0141	1/2-13X 1-1/2", GR 5
18	090-0629	Nut, Nylon Lock, 1/2-13
19	090-0719	Bolt 5/16-18 X 5-1/2", GR5
20	090-0088	Bolt, 5/16-18 X 1", GR 5
21	090-0460	Nut, Nylon Lock, 5/16-18
22	090-0677	Bolt, Carriage, 1/4-20 X 1"
23	090-0245	Washer, Flat, 1/4"
24	090-0470	Nut, Nylon Lock, 1/4-20
25	090-0111	Bolt, 3/8-16 X 1-1/4", GR 5
26	090-0461	Nut, Nylon Lock, 3/8-16
27	930-2012	Cover, Access
28	090-0162	Screw, Self Tapping, 10-32 X 3/8"

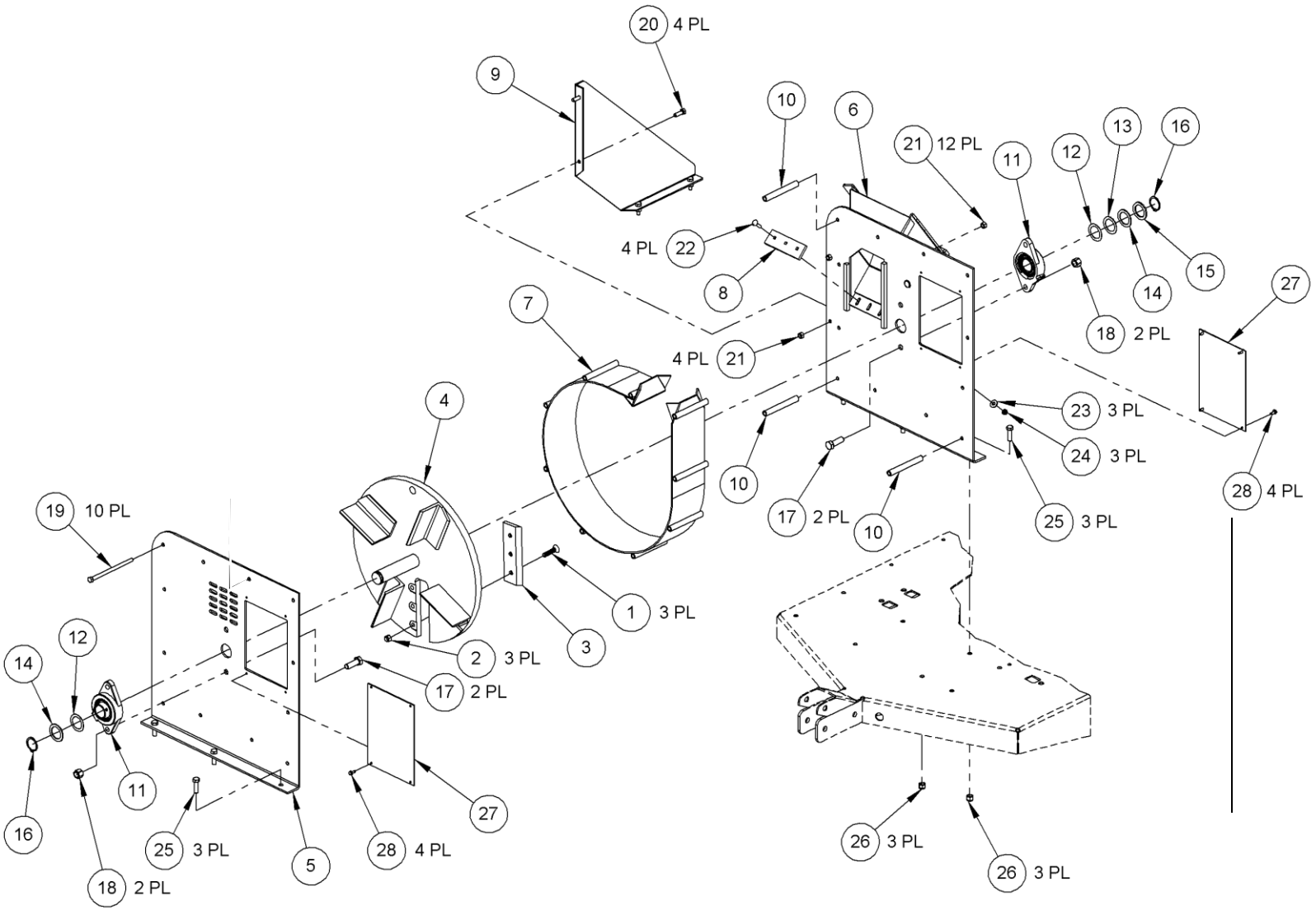
### Not Illustrated

930-2005	Knife Kit
030-0384	Gauge, Knife Gap

### Safety & Information Labels

930-0009	Label, Warning, Rotating Parts Inside
930-0001	Label, Warning, Rotating Knife and Flywheel

**Schematic - Chipper Basic**



## ***Parts List – Hopper Assembly***

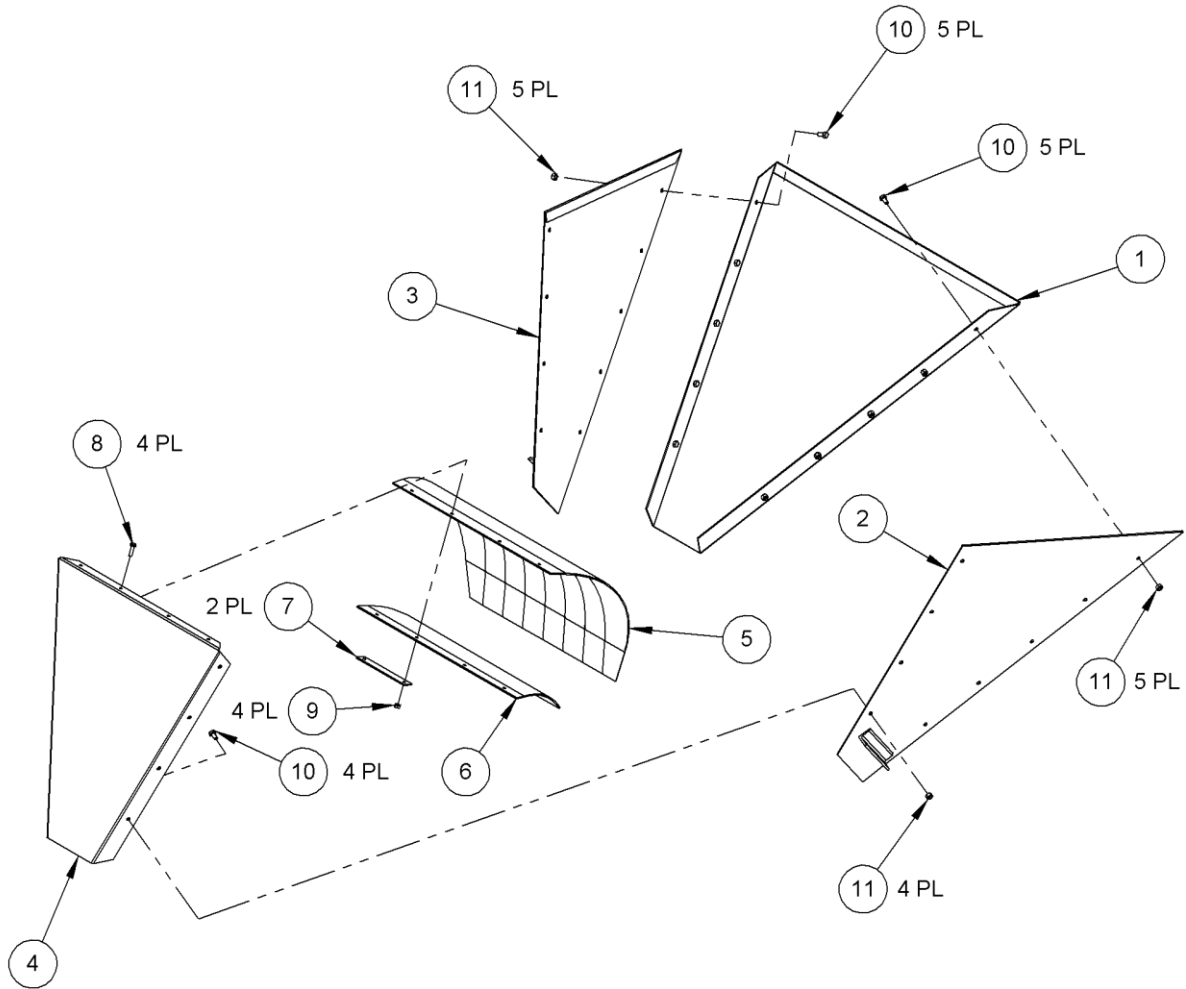
### **NOTE:**

<b>Ref#</b>	<b>Part#</b>	<b>Description</b>
01	930-2110	Hopper Weldment, Bottom
02	930-2111	Hopper Weldment, Left
03	930-2112	Hopper Weldment, Right
04	930-2057	Hopper, Top
05	930-2071	Shield, Blow-Back
06	030-0541	Support, Blow-Back
07	930-1073	Bracket, Guard
08	090-0060	Bolt, 1/4-20 X 1", GR5
09	090-0470	Nut, Nylon Lock, 1/4- 20
10	090-0731	Bolt, Philips Head, 5/16-18 X 1/2", GR 5
11	090-0639	Nut, Nylon Lock, Thin, 5/16-18

### **Safety & Information Labels**

930-0013 Label, Danger, Avoid Death

# Schematic – Hopper Assembly





## Parts List -

### ROAD-TOWING

<u>Ref#</u>	<u>Part#</u>	<u>Description</u>
01	930-2117	Tongue Weldment, Highway
02	930-0218	Hitch, Trailer
03	408-0078	Chain, Safety, Class 1
04	090-0133	Bolt 1/2-13 X 3-1/2", GR5
05	090-0629	Nut, Nylon Lock, 1/2-13
06	090-0123	Bolt 3/8-16 X 3-1/2", GR5
07	090-0461	Nut, Nylon Lock, 3/8-16
08	090-0234	Washer, Flat, 3/8"
09	930-2121	Axle Weldment
	930-2045	Axle Brackets-not shown
10	930-2122	Weldment
11	702-0040	Wheel & Tire Assembly, w/hub
12	030-0265	Light, Stop, Curb Side (optional)
13	030-0266	Light, Stop, Road Side (optional)
14	030-0267	Wire Harness, 10ft (optional)
15	090-0111	Bolt 3/8-16 X 1-1/4", GR5
16	090-0088	Bolt, 5/16-18 X 1"
17	090-0460	Nut, Nylon Lock, 5/16-18

### Safety & Information Labels

930-0003	Label, Danger, 45 mph
930-0014	Label, Warning, Do Not Climb

### EXTENDED TOP-DISCHARGE CHUTE

<u>Ref#</u>	<u>Part#</u>	<u>Description</u>
18	930-2077	Flange, Side
19	930-2078	Plate, Bottom
20	930-2118	Swivel Weldment
21	930-2119	Top Discharge Weldment
22	930-2120	Deflector Weldment
23	090-0088	Bolt, Carriage, 5/16-18 X 1", GR 5
24	090-0233	Washer, Flat, 5/16"
25	090-0460	Nut, Nylon Lock, 5/16-18
26	090-0060	Bolt, 1/4-20 X 1", GR 5
27	090-0470	Nut, Nylon Lock, 1/4-20
28	708-3211	Pin, Locking
29	706-0924	Hitch Clip
30	930-2064	Swivel Top, Pin Side
31	930-2065	Swivel Top
32	930-2063	Spacer, Swivel

### Safety & Information Labels

930-0010	Label, Warning, High Speed Discharge
930-0011	Label, Danger, Rotating Knife and Flywheel

**Schematic -**

