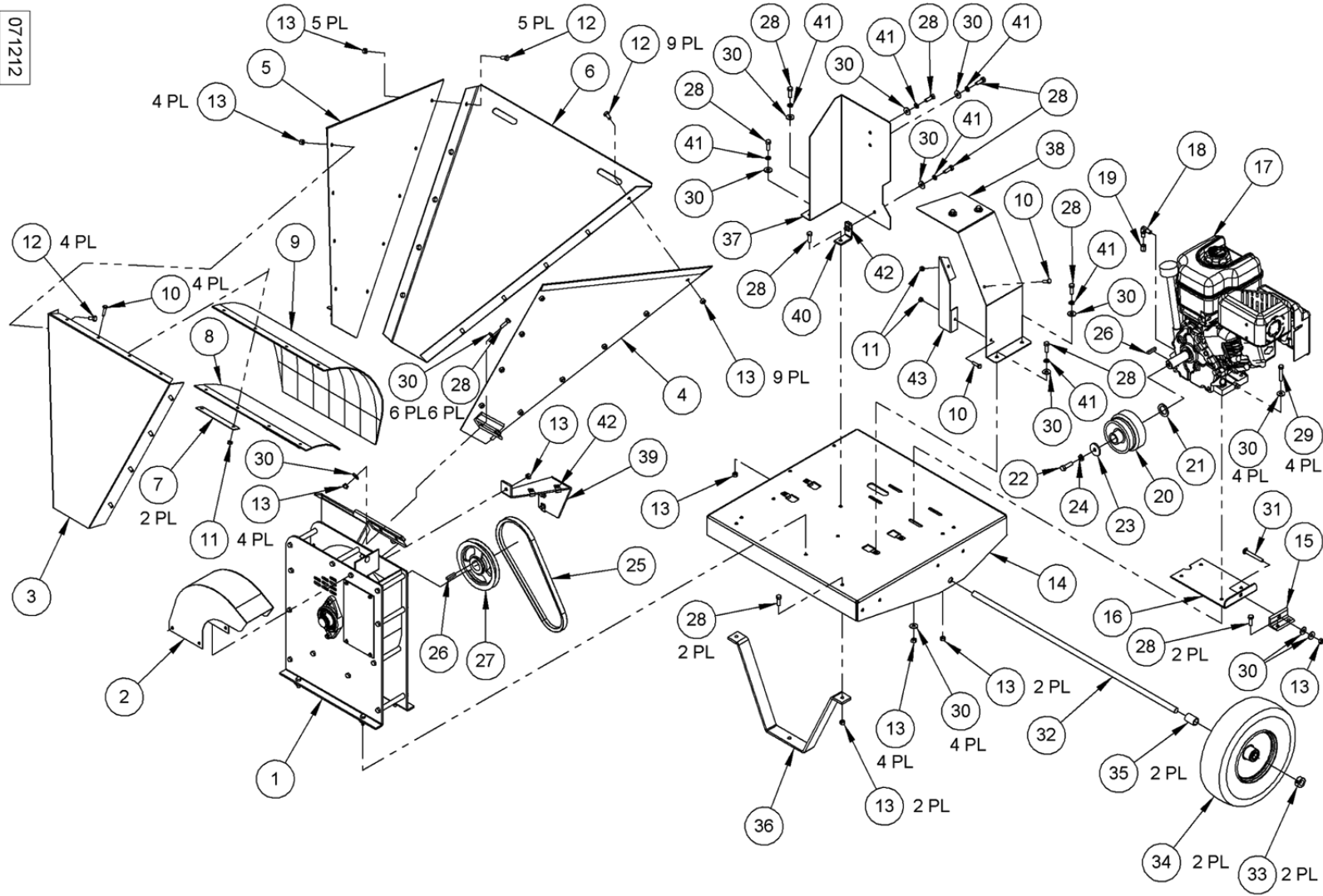


SECTION 6

PARTS LIST AND SCHEMATIC DIAGRAMS

<u>Ref#</u>	<u>Part#</u>	<u>Description</u>
01	930-1201	Chipper Basic Assembly
02	930-1113	Discharge Weldment
03	930-1062	Hopper, Top
04	930-1111	Hopper Weldment, Left
05	930-1112	Hopper Weldment, Right
06	930-1110	Hopper Weldment, Bottom
07	930-1073	Bracket, Guard
08	930-1070	Support, Blow-Back
09	930-1071	Shield, Blow-Back
10	090-0060	Bolt, Hex Head, 1/4-20 X 1'
11	090-0470	Nut, Nylon Lock, 1/4-20
12	090-0731	Bolt, Philips Head, 5/16-18 X 1/2"
13	090-0460	Nut, Nylon Lock, Thin, 5/16-18
14	930-1118	Frame, Base
15	930-1042	Bracket, Belt Tension
16	930-1041	Plate, Engine
17	030-0654	10 HP Vanguard Engine
18	030-0557	Elbow, 1/4" NPT, 90 DEG
19	030-0542	Cap, Pipe, Hex Head, 1/4" NPT
20	030-0164	Clutch
21	090-0024-4	Shim, 1.5 X 1.015 X .125
22	090-0021	Bolt, HCS, GR 8, 3/8-24 X 1-1/4"
23	704-0106	Washer, 1.5 OD .390 ID .156 Thick
24	090-0228	Washer, Lock, Split, 3/8"
25	030-0661	Belt, V
26	080-0081	Key, Shaft, 1/4" SQ X 1-1/4"
27	030-0229	Sheave
28	090-0088	Bolt, HCS, GR5, 5/16-18 X 1"
29	090-0091	Bolt, HCS, GR5, 5/16-18 X 1-3/4"
30	090-0233	Flat Washer, 5/16" USS
31	090-0410	Bolt, Carriage, 5/16-18 X 3"
32	930-1094	Axle, .75"OD
33	090-0730	Collar, Shaft
34	030-0642	Wheel, Pneumatic, W/ Tube 4.10/3.50-6
35	805-0052	Spacer, Wheel, 1" OD
36	930-1013	Stand, Front, 1.5 X 1/4"
37	930-1092	Guard, Belt, Front
38	930-1095	Guard, Top, Belt
39	930-1091	Bracket, Belt Guard
40	930-1018	Bracket, 3/16"
41	090-0394	Washer, Lock, 5/16"
42	090-0438	Nut, "J", 5/16-18
43	930-1057	Guard, Belt, Back
<u>Not Illustrated</u>		
	930-1206	Hopper Assembly
<u>Safety & Information Labels</u>		
	930-0002	Label, Danger, Read Operators Manual
	940-0011	Label, Danger, Rotating Knife and Flywheel
	930-0004	Label, Warning, Rotating Parts
	091-0043	Label, Warning, Check Oil
	930-0010	Label, Warning, High Speed Discharge
	930-0013	Label, Danger, Avoid Death
	930-0014	Label, Warning, Do Not Climb
	091-0062	Label, USA

Schematic - CHIPPER

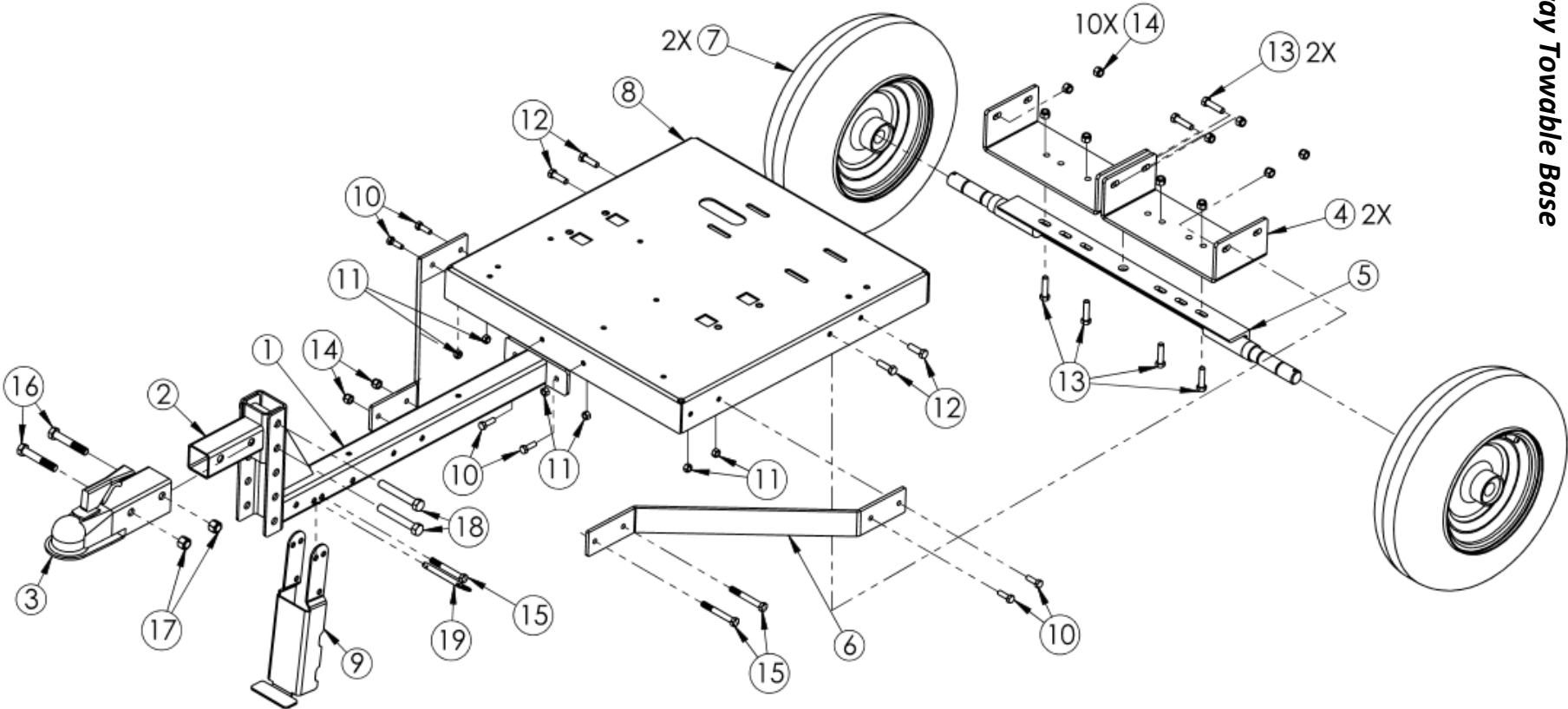


071212

Parts List – Highway Towable Base

Ref#	Part#	Description
01	930-1120	Small Highway Tongue Weldment
02	930-1121	Small Receiver Weldment
03	913-0218	Trailer Hitch
04	930-1122	Axle Bracket
05	900-0250	Axle
06	930-1034	Hitch Support
07	702-0040	Wheel
08	930-1098	WC35 Highway Base Weldment
09	930-1123	Hitch Leg
10	090-0088	5/16-18 X 1" HHCS Bolt
11	090-0460	5/16-18 Nylon Locknut
12	090-0111	3/8-16 X 1-1/4" HHCS Bolt
13	090-0113	3/8-16 X 1-3/4" HHCS Bolt
14	090-0461	3/8-16 Nylock Nut
15	090-0116	3/8-16 X 3 HHCS Bolt
16	090-0370	1/2-13 X 3" HHCS Bolt Gr. 5 PLTD
17	090-0629	1/2-13 Nylock Nut
18	090-0133	1/2-13 X 3-1/2" HHCS Bolt Gr. 5
19	090-0749	3/8 X 2-3/4" Ring Pin ZP
20	706-0924	Pin, Hitch Clip, 1/2 to 9/16, .12 Wire

Schematic – Highway Towable Base



Parts List – Chipper Basic Assembly

Ref#	Part#	Description
01	090-0642	Screw, 5/16-18 X 1-1/2", GR 8
02	090-0460	Nut, Nylon Lock, 5/16-18
03	930-1003	Knife, Premier
04	930-1250	Flywheel Weldment
05	930-1011	Sideplate, Vent
06	930-1102	Sideplate Weldment, Chute
07	930-1107	Scroll Weldment
08	930-1023	Plate, Wear .25"
09	930-1012	Cover, Access
10	930-1017	Tube, Scroll 1/4"
11	030-0279	Bearing, 2 Bolt, 1-3/16"
12	090-0024-6	Shim, Shaft, 1-3/16", .025" Thick (as needed)
13	090-0024-2	Shim, Shaft, 1-3/16", .050" Thick (as needed)
14	090-0024-3	Shim, Shaft, 1-3/16", .075" Thick (as needed)
15	090-0024-4	Shim, Shaft, 1-3/16", .125" Thick (as needed)
16	090-0676	Ring, Retaining
17	090-0088	Bolt, 5/16-18 X 1"

Ref#	Part#	Description
18	090-0233	Washer, Flat, 5/16"
19	090-0702	Bolt, 5/16-18 X 4-1/2", GR 5
20	090-0677	Bolt, Carriage, 1/4-20 X 1"
21	090-0245	Washer, Flat, 1/4"
22	090-0470	Nut, Nylon Lock, 1/4-20
23	090-0121	Bolt, 3/8-16 X 1-1/4", GR 5
24	090-0461	Nut, Nylon Lock, 3/8-16
25	090-0462	Bolt, Carriage, 5/16-18 X 3/4"
26	090-0162	Screw, Self Tapping, 10-32 X 3/8"

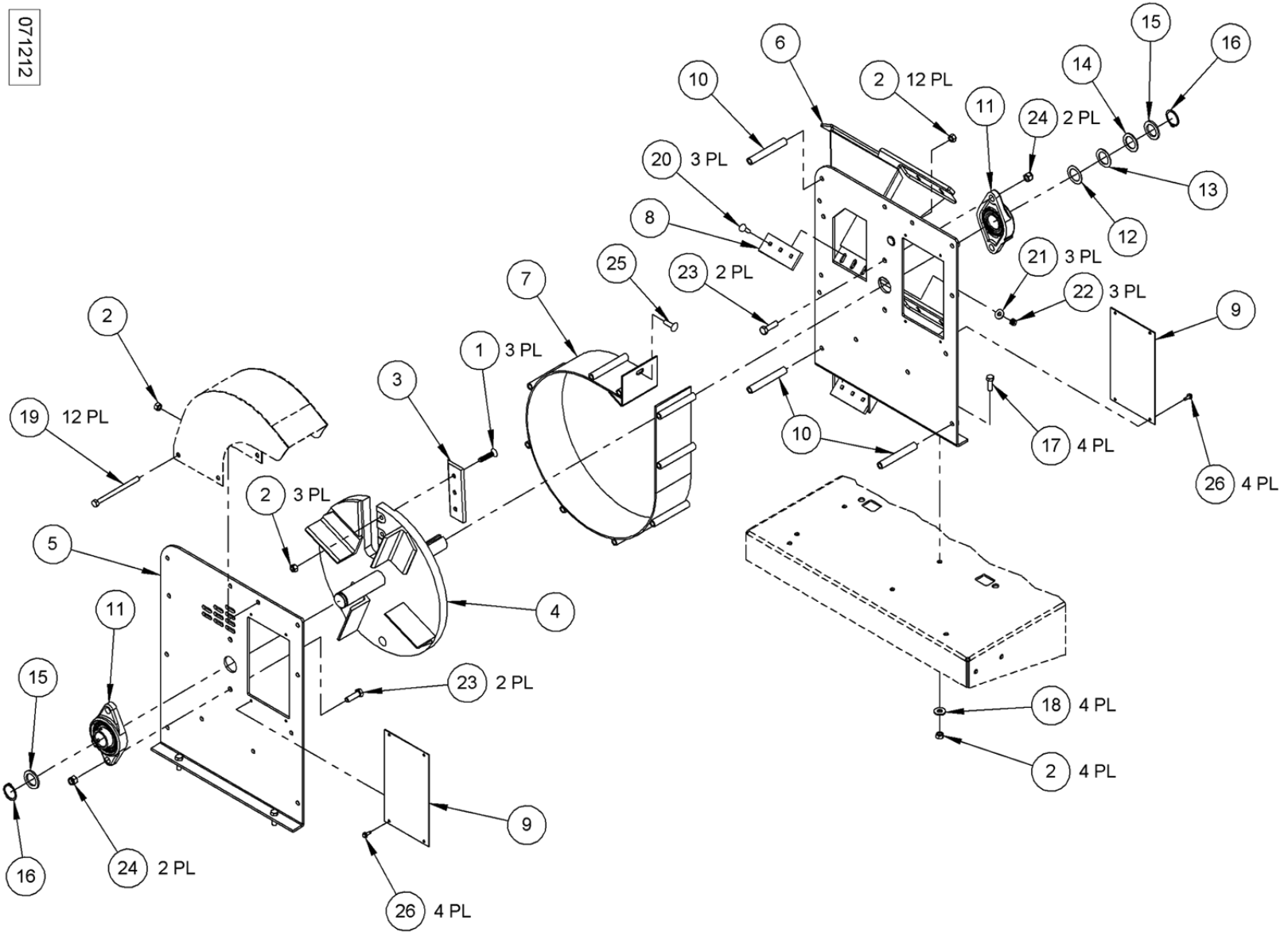
Not Illustrated

030-0384	Gauge, Knife Gap
930-1005	Knife Kit

Safety & Information Labels

930-0009	Label, Warning, Rotating Parts Inside
940-0001	Label, Warning, Rotating Knife and Flywheel

Schematic - Chipper Basic Assembly



071212