

Chapter 7: Parts Lists, Schematic Diagrams and Warranty

Parts List – MAIN ASSEMBLY

NOTE: Part numbers listed are available through MacKissic Inc.

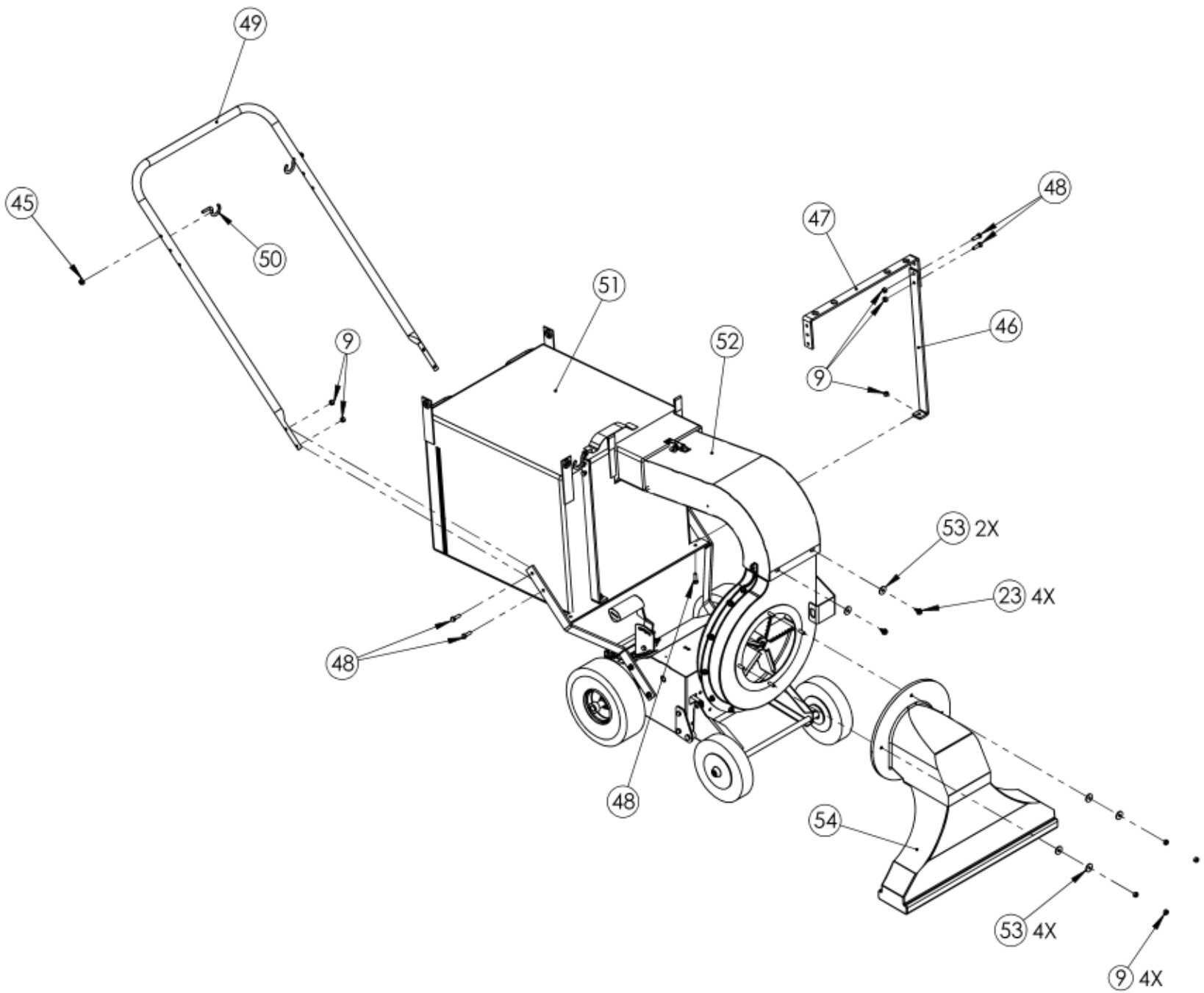
ITEM NO.	PART NUMBER	DESCRIPTION
1	805-0382	VCB BASE WLDMT
2	805-0250	HEIGHT ADJUST BASE
3	805-0387	HEIGHT ADJUST HANDLE
4	090-0115	3/8 - 16 X 2 1/2 HHCS GR5
5	712-0069	SPRING, LC-092H-6 1-1/2"
6	090-0234	WASHER, FLAT, 3/8, USS
7	090-0461	3/8-16 Nylock Nut
8	090-0066	5/16-18 X 3/4" HHCS
9	090-0460	NUT, NYLON LOCK, 5/16-18
10	805-0383	BEARING PLATE
11	030-0174	3/4" FLANGED BEARING W/ SET SCRE
12	090-0233	WASHER, FLAT, 5/16" USS
13	805-0385	Height Adjust Linkage - V2
14	090-0656	HAIR PIN - "WW" #213
15	805-0391	FRONT WHEEL FRAME WELDMENT
16	805-0384	PIVOT MOUNT PLATE
17	500-0012	7/8"OD X 0.083 WALL X 5/8"L SPACE
18	030-0507	1100 Series Engine
19	090-0089	5/16-18 X 1-1/4 HHCS GR5
20	805-0121	BOTTOM COVER
21	805-0406	AXLE - VMS
22	805-0114	LOWER HANDLE
23	090-0679	5/16-18 X 3/4 TYP 23 SELF TAP
24	805-0328	BATTERY BRACKET
25	030-0244	BATTERY
26	090-0708	5/16-18 X 5" HHCS
27	108-0414	BATTERY HOLD DOWN
28	805-0052	WHEEL SPACER
29	703-0108	4.10/3.50-4 PNEUMATIC WHEEL
30	090-0730	3/4 IN LOCKING COLLAR
31	701-0052	8X1.75X5/8 BORE SEMI-PNEUMATIC WHEE
32	090-0457	PUSH NUT CAP
33	500-0045	HANDLE GRIP
34	805-0407	VMS ENGINE HOUSING
35	090-0394	Washer Lock 7/16 Split ZP
36	090-0505	5/16-24 X 2/1/4 HHCS
37	703-0424	.25 X 2 KEY
38	805-0337	IMPELLER SPACER
39	704-0244	VAC IMPELLER
40	090-0228	3/8 MED SPLIT LOCKWASHER
41	090-0538	3/8-24 X 2-1/2" HHCS GR8
42	804-0218	VCB/LLV INLET HOUSING
43	805-0311	SNOUT INTERLOCK BRACKET
44	090-0067	BOLT, HCS, 5/16-18 X 1
45	090-0418	5/16-18 WHIZLOCK NUT

Parts List – FINAL ASSEMBLY

NOTE: Part numbers listed are available through MacKissic Inc.

ITEM NO.	PART NUMBER	DESCRIPTION
9	090-0460	NUT, NYLON LOCK, 5/16-18
23	090-0503	5/16-18 X 3/4" SELF TAPPING HHCS
45	090-0418	5/16-18 WHIZLOCK NUT
46	805-0339	SIDE BAG HANGER
47	805-0367	TOP BAG HANGER
48	090-0088	BOLT, HHCS, 5/16-18 X 1
49	805-0098	UPPER HANDLE BAR
50	805-0119	BAG HANGER HOOK
51	805-0354	VCB BAG - BLACK W/ GROMMITS
52	805-0356	J-TUBE ASSEMBLY
53	090-0502	5/16 FENDER WASHER
54	805-0347	SNOUT ASSEMBLY
55	090-0679	5/16-18 X 3/4 TYP 23 SELF TAP

Schematic – FINAL ASSEMBLY



Parts List – OPTIONAL VACUUM KIT #805-0129

NOTE: Part numbers listed are available through MacKissic Inc.

Ref#	Part#	Description	Ref#	Part#	Description
01	805-0338	Adapter, Vacuum	08	804-0078-BL	Handle
02	32412	Clamp, Hose, 6-1/8"	09	500-0041	Grip, Handle
03	32027-B	Hose, 6" Dia. X 8' Long	10	704-0197	Tether, Wire
04	900-0074A	Cable Tie, 32"	11	706-2243	Guide, Cable
05	090-0179	Screw, Machine, Rd Hd, 1/4-20 x 3/4"	12	285621	Contact, Interlock
06	704-0117	Snout, Pick-up	13	284581	Rivet, 3/16"
07	090-0470	Nut, Nylon Lock, 1/4-20	NS	080-0970	Shut Down Eng.

