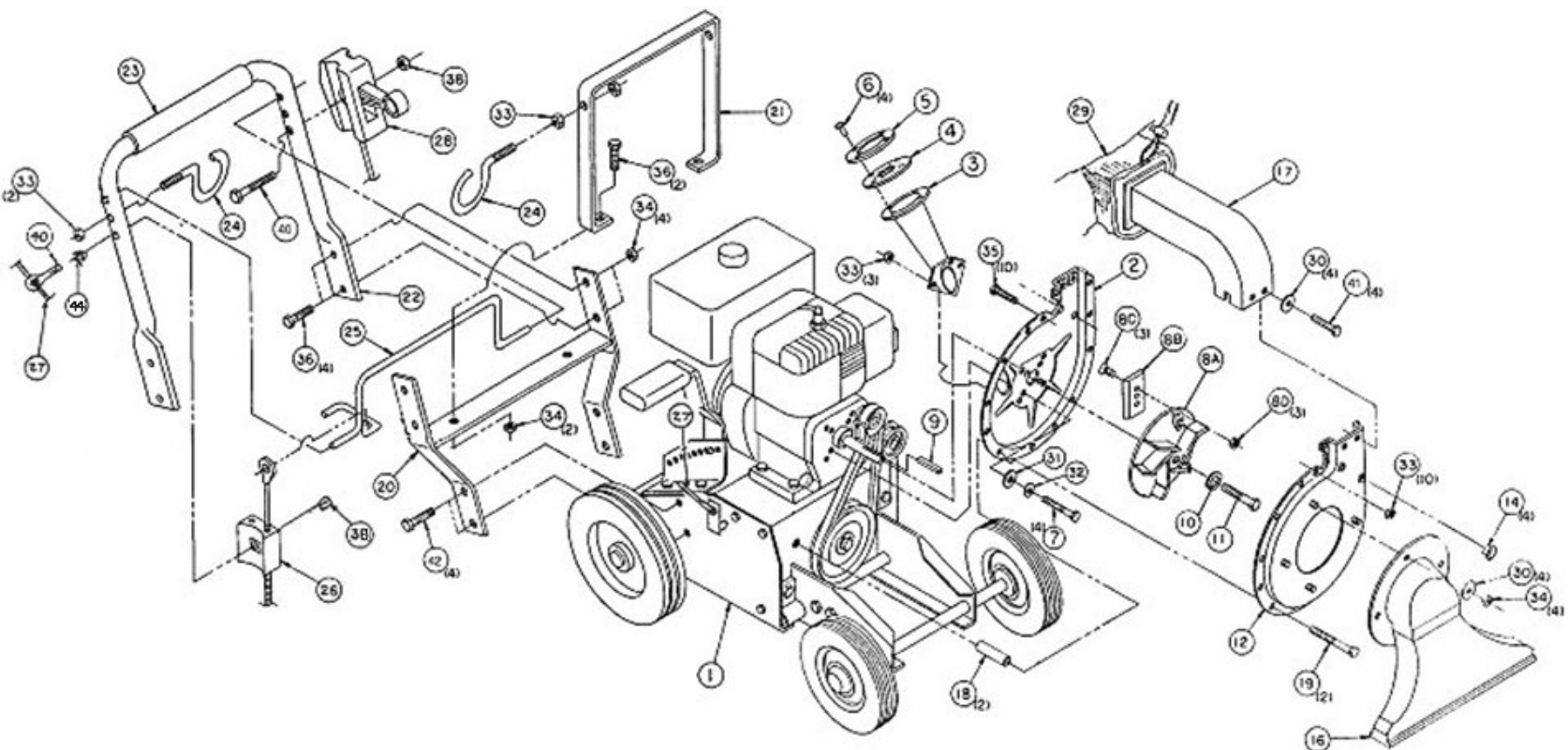


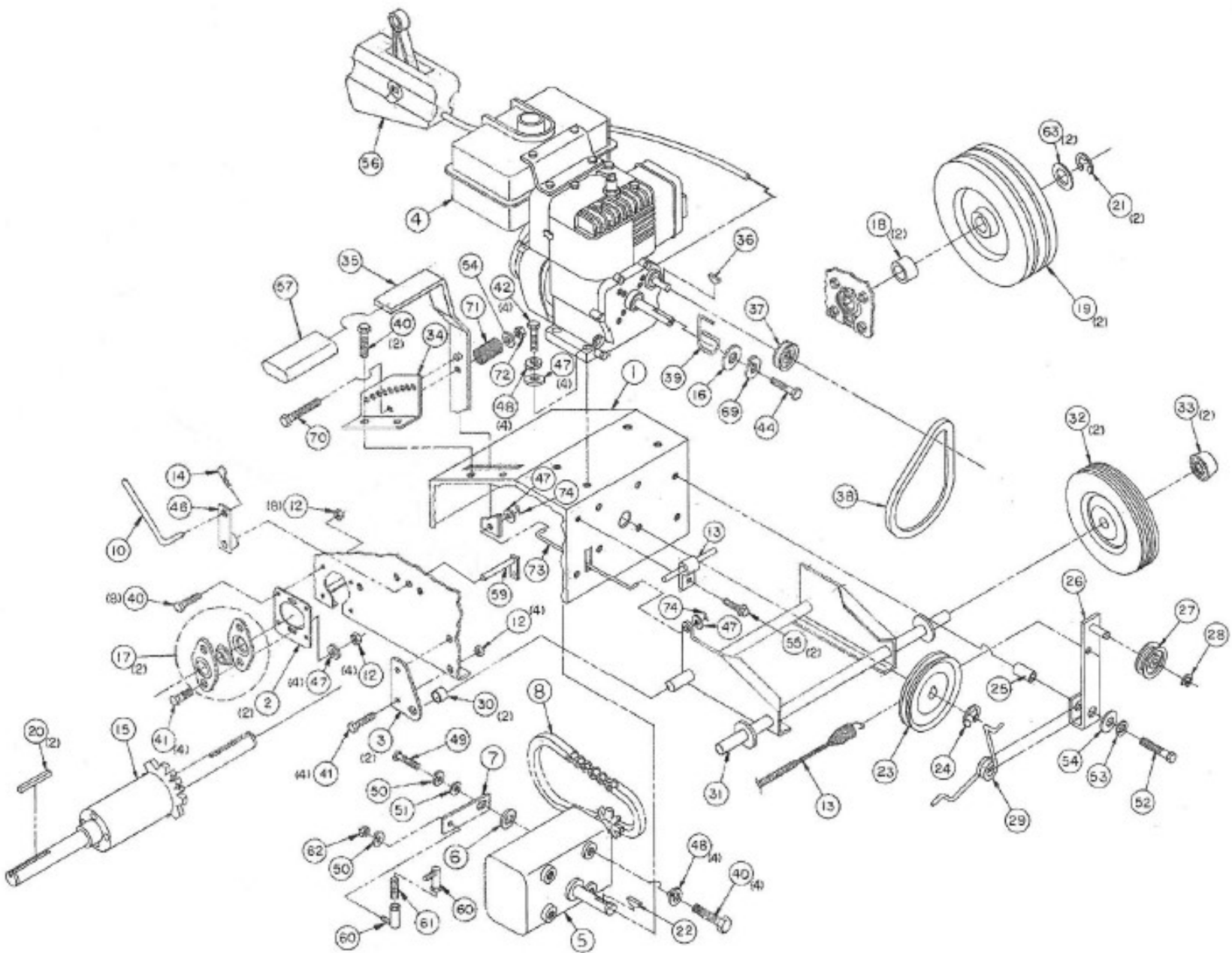
**SECTION VII – Parts List & Assembly Diagrams**  
**VCB Main Assembly**



## VCB Main Assembly

Item No.	Part No.	Description	Qty.
2	805-0280	Engine Housing Weldment (for VCB1102E)	1
2	805-0315	Housing Spacer Weldment (for VCB1102E)	1
2	805-0353	Engine Housing Weldment	1
3	805-0270	Chipper Tube Weldment (for VCB1102E)	1
3	805-0216	Chipper Tube Weldment	1
4	804-0033	Chipper Chute Cover	1
5	804-0031	Chipper Tube Flange	1
5	704-9000	Chipper Tube Cover (EXK Only)	1
6	090-0512	3/16 x 13/32 Rivet	4
7	090-0505	5/16-24 x 2-1/4" HHCS	3
***	805-0305	Complete Impeller Kit (Includes 8A,B,C,D)	
8A	805-0145	Shredder Plate Weldment	1
8A	805-0337	Impeller Spacer (for VCB1102E)	1
8B	030-0351	Chipper Knife	1
8C	090-0413	5/16-18 x 1" FHSCS	3
8D	090-0460	5/16-18 Nylock Nut	3
9	703-0424	1/4" x 1/4" x 2" Key	1
10	090-0228	3/8" Split Lockwasher	1
11	090-0538	3/8-24 x 2-1/2" HHCS GR8	1
12	804-0218	Inlet Housing Weldment	1
16	805-0139	Vacuum Inlet Snout Assembly	1
17	805-0356	J-Tube Sub Assembly	1
18	805-0303	Lower Housing Mounting Spacer	2
18	805-0336	Lower Spacer Tube (for VCB1102E)	2
19	090-0708	5/16-18 x 5" HHCS	2
20	805-0114	Lower Handle Weldment	1
21	805-0339	Bag Hanger Side	2
21	805-0367	Bag Hanger Top	1
22	805-0098	Upper Handle	1
23	860-0045	Handle Grip	1
24	805-0119	Bag Hanger Hook	3
25	805-0035	Bail Weldment	1
26	805-0101	Clutch Cable Assembly	1
27	805-0153-1	Shift Rod	1
28	030-0385	Throttle Control	1
29	805-0345	Collection Bag Assembly	1
30	090-0502	5/16 Fender Washer	8
31	090-0233	5/16" USS Flatwasher	4
32	090-0394	5/16" Split Lockwasher	4
33	090-0418	5/16-18 Whiz Locknut	17
34	090-0460	5/16-18 Nylock Nut	15
35	090-0067	5/16-18 x 5/8" HHCS	14
36	090-0088	5/16-18 x 1 HHCS	6
38	090-0470	1/4-20 Nylock Nut	2
40	090-0729	1/4-20 x 5" Eyebolt	1
41	090-0066	5/16-18 x 3/4" HHCS	4
42	090-0405	1/4-20 x 2-1/4" HHCS	1
43	090-0503	5/16-18 x 3/4 Self Tapping Screw	4
44	090-0453	1/4-20 Whiz Locknut	1
--	805-0326	Carabineer	2
--	805-0328	Battery Bracket (for VCB1102E)	1
--	805-0329	Positive Battery Cable (RED) (for VCB1102E)	1
--	805-0330	Negative Battery Cable (Black) (for VCB1102E)	1
--	020-0084	Ring Terminal PC16/14-1/4R (for VCB1102E)	1
--	108-0414	Battery Hold Down (for VCB1102E)	1
--	030-0244	Battery 12V 7.2 Amp (for VCB1102E)	1
--	090-0708	5/16-18 x 5" HHCS (for VCB1102E, VCB1102EM)	2

Schematic – DRIVE TRAIN ASSEMBLY

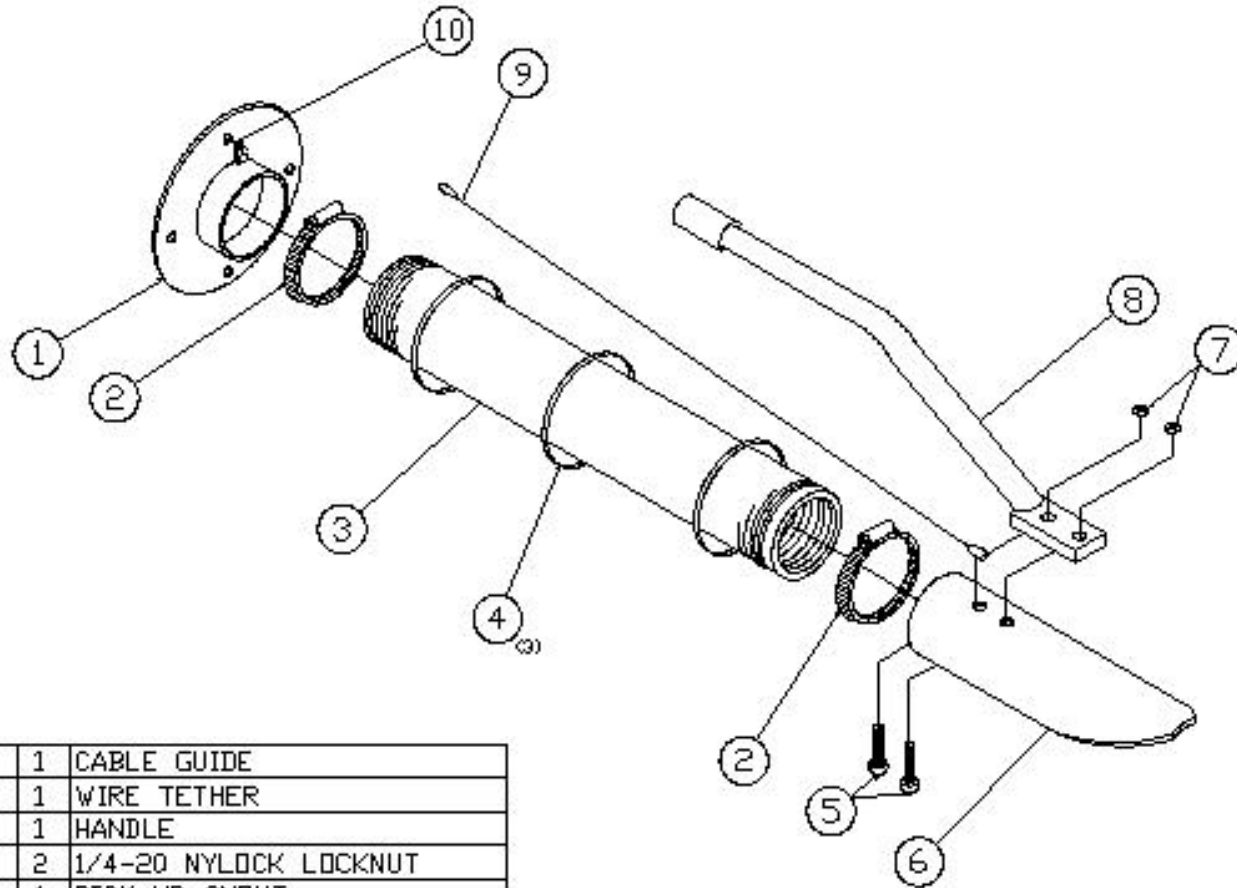


## VCB Drive Train Assembly

Item No.	Part No.	Description	Qty.
1	805-0382	Engine Base Weldment	1
2	805-0383	Bearing Plate	2
3	805-0384	Pivot Mount	2
4	030-0594	B&S Electric Start Engine	1
4	030-0595	B&S Engine	1
5	805-0003	Transmission	1
6	805-0065	Shift Lever Washer	1
7	805-0154	Transmission Shift Lever	1
8	805-0061	#40 Chain .5 Pitch x 24" LG	1
10	805-0153-1	Shift Rod	1
12	090-0460	5/16-18 Nylock Nut	4
13	805-0101	Clutch Cable Assembly	1
14	100-0015	Hair Spring Cotter Pin	1
15	805-0042	Differential	1
16	090-0244	Washer - 7/16"	1
17	030-0174	3/4" Bearing - 2 Hole Flange	2
18	805-0052	Wheel Spacer	2
19	805-0006	Pneumatic Wheel (4.10/3.50-4)	2
20	703-0505	3/16" x 3/16" x 1-1/2" Shaft Key	2
21	090-0495	3/4" Dia. E-Ring Pltd	2
22	090-0493	#606 Woodruff Key (3/16" x 3/4")	1
23	030-0175	Transmission Pulley	1
24	090-0494	5/8" Dia. E-Ring Pltd	1
25	805-0023	Spacer Tube	1
26	860-0041	Idler Arm Weldment	1
27	030-0191	Idler Pulley	1
28	090-0497	3/8" Dia. E-Ring Pltd	1
29	030-0401	Torsion Spring	1
30	500-0012	Spacer	2
31	805-0391	Front Wheel Frame Weldment	1
32	701-0052	8" x 1.75" Wheel	2
33	090-0457	Push Nut Cap	2
34	805-0250	Height Adjuster Base	1
35	805-0387	Height Adjuster Handle Weldment	1
36	090-0496	#405 Woodruff Key (1/8" x 5/8")	1
37	030-0292	Engine Pulley with set screw	1
38	030-0293	V-Belt 3H330	1
39	805-0219	Belt Guide	1
40	090-0066	5/16-18 x 3/4" HHCS GR 5 Pltd.	6
41	090-0088	5/16-18 x 1" HHCS GR 5 Pltd.	6
42	090-0089	5/16-18 x 1-1/4" HHCS GR 5 Pltd.	4
44	090-0682	1/2-20 X 3/4" HHCS	1
	090-0460	5/16-18 Nylock Nut	22
46	805-0317	Long Shift Arm	1
47	090-0233	5/16" USS Flatwasher Pltd.	6
48	090-0394	5/16" Med. Split Lockwasher Pltd.	6
49	090-0427	1/4-28 x 3/4" HHCS GR 5 Pltd.	1
50	090-0378	1/4" Med. Split Lockwasher Pltd.	1
51	090-0232	1/4" USS Flatwasher Pltd.	1
52	090-0113	3/8-16 x 1 3/4" HHCS GR 5 Pltd.	1
53	090-0228	3/8" Med. Split Lockwasher Pltd.	1
54	090-0234	3/8" Flatwasher Pltd.	2
55	090-0504	#10-24 x 1/2" LG Hex Washer Head	2
56	030-0385	Throttle Control	1
57	500-0045	Height Adjuster Grip	1
59	805-0160	Inner Shift Weldment	1
60	090-0264	Ball Joint	2
61	805-0182	Linkage Arm	1
62	090-0265	1/4"-28 Hex Nut	2
63	090-0517	Shim - Rear Axle	2
69	090-0351	1/2" Split Lockwasher	1
70	090-0115	3/8-16 x 2-1/2" HHCS	1
71	712-0069	Spring	1
72	090-0461	3/8-16 Nylock Nut	1
73	805-0385	Height Adjust Linkage	1
74	090-0656	Hair Pin	2
---	805-0121	Bottom Cover	1

PROPRIETARY

805-0129



OPTIONAL VAC KIT

10	706-2243	1	CABLE GUIDE
9	704-0197	1	WIRE TETHER
8	804-0078	1	HANDLE
7	090-0470	2	1/4-20 NYLOCK LOCKNUT
6	704-0117	1	PICK-UP SNOUT
5	090-0179	2	1/4-20x3/4' RD HD MACH SCW
4	900-0074A	3	32' CABLE TIE
3	32027	1	6" DIA HOSE x 8'
2	32412	2	6-1/8" HOSE CLAMP
1	704-0165	1	VAC ADAPTER
NO.	PART #	QTY	DESCRIPTION

MockSSIC, Inc. Parker Ford, PA			
.VACUUM_KIT			
DATE	BY	REV	8/20/03
1/08			
3'			805-0129