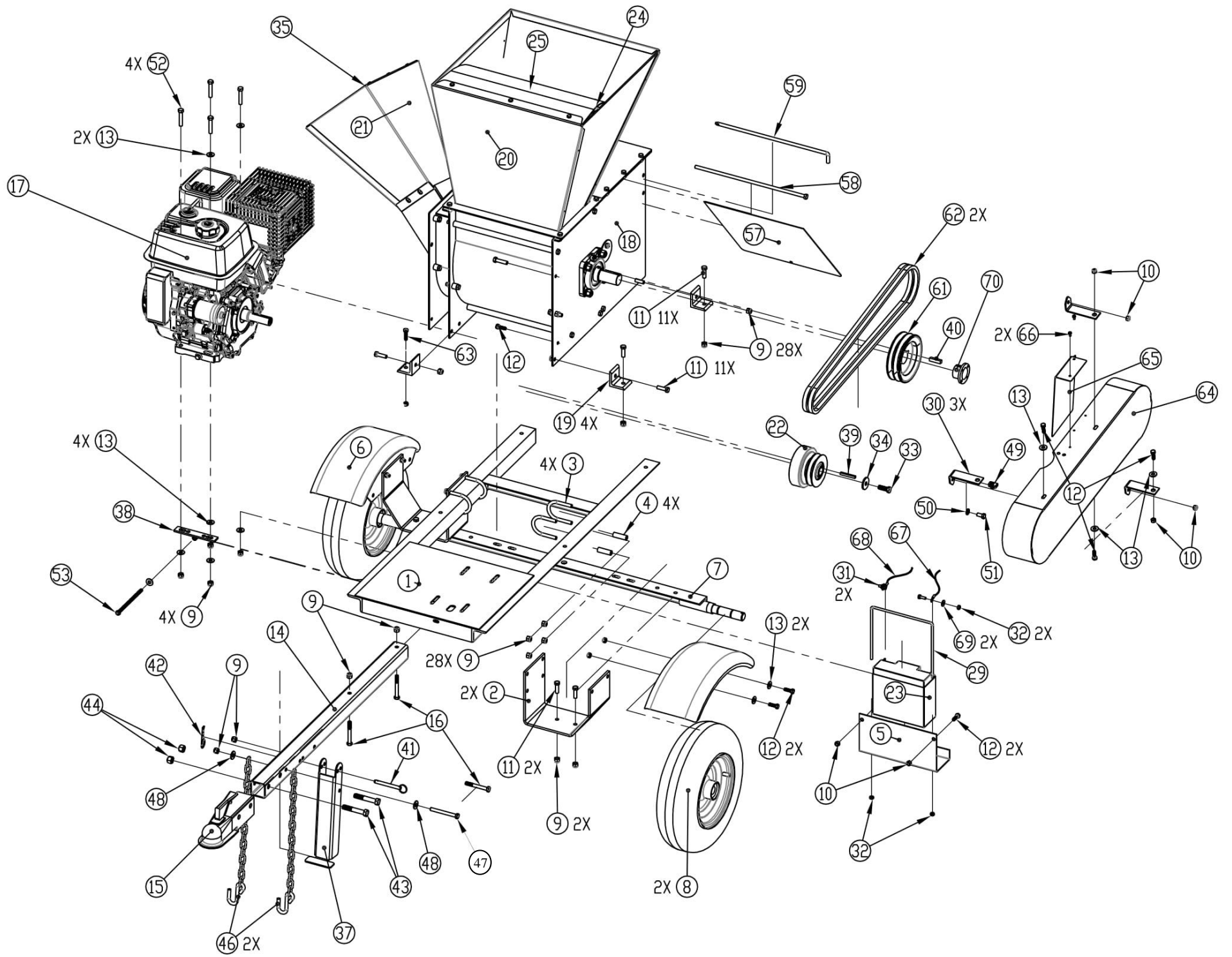


SECTION VI - PARTS

SC185 PARTS LIST

ITEM NO.	COMPONENT	DESCRIPTION	QTY
1	921-0239	Frame Weldment	1
2	911-0212	Axle Bracket	2
3	911-0229	U-Bolt, 3/8-16 X 3 Dp X 2 Betw	4
4	709-3140	Frame Rail Spacer	4
5	911-0213	Battery Box	1
6	930-2122	450/550 Fender Wldmnt	2
7	911-0070	Axle Weldment	1
8	702-0040	Wheel & Tire Assy W/ Hub	2
9	090-0461	3/8-16 Nylon Insert Locknut P	28
10	090-0460	5/16-18 Nylon Insert Locknut P	18
11	090-0111	3/8-16 X 1 1/4 Hhcs Gr5 Pltd	11
12	090-0088	5/16-18 X 1" Hhcs Gr 5 Pltd	10
13	090-0233	5/16" Uss Flatwasher Pltd	17
14	921-0220	Hitch Tube	1
15	913-0218	Trailer Hitch	1
16	090-0116	3/8-16 X 3 Hhcs Gr 5 Pltd	3
17	030-0607	2100 Series Electric Start Eng	1
18	911-0400	SC185 Basic Unit	1
19	921-0206	Angle, Basic To Frame	4
20	921-0028	Shredder Hopper Weldment	1
21	921-0375	Chute Hopper Weldment	1
22	030-0612	1" Clutch A/B 2grv Pulley 4"	1
23	911-0250	Battery-Wet/Sealed	1
24	921-0297	Blow Back Support	1
25	810-0298	Blowback Shield	1
29	930-3086	Battery Hold Down	1
30	921-0027	Belt Guard Bracket	3
31	090-0012	1/4-20 X 3/4 Hhcs Gr5 Pltd	5
32	090-0470	1/4-20 Nylok Locknut Pltd	7
33	090-0153	7/16-20 X 1 1/4 Hhcs Gr 8 Pltd	1
34	090-0709	Washer 1.5 Od .453 Id .156 Thk	1
35	913-0376	Hopper Blow Back Shield	1
36	090-0739	10-24 X 3/4 Lg. Hhms Zp	3
37	921-0035	Highway Hitch Leg	1
38	900-0360	Belt Tensioner Weldment	1
39	703-0424	1/4 Sq X 2" Key	1
40	080-0084	3/8 Sq X 1 1/2 Shaft Key	1
41	090-0749	3/8" X 2 3/4" Ring Pin Zp	1
42	706-0924	PIN, HITCH CLIP, 1/2 TO 9/16, .12 W	1
43	090-0370	1/2-13 X 3 Hhcs Gr5 Pltd	2
44	090-0050	1/2-13 Gripco Locknut Gr B Plt	2
45	090-0537	Washer .205 Id X 3/4 Od X .060	6

46	408-0078	3/16 Class 1 Trailer Safety Ch	2
47	090-0123	3/8-16 X 3 1/2 Hhcs Gr 5 Pltd	1
48	090-0234	3/8 Uss Flatwasher Pltd	2
49	090-0438	5/16-18 J-Nut Plain	1
50	090-0228	3/8 Med Split Lockwasher Pltd	1
51	090-0098	3/8-16 X 3/4 Hhcs Gr5 Pltd	1
52	090-0114	3/8-16 X 2 Hhcs Gr5 Pltd	4
53	090-0755	5/16-18 X 6" HH TAP BOLT	1
55	090-0703	10-24 Nylock Nut Zp	3
57	911-0033	Baffle Weldment	1
58	911-0050	3/8-16 X 15"Lg Hhcs Pltd (Tie	1
59	911-0036	Screen & Baffle Rod	1
60	500-0039	3/16" Hair Spring Cotter - Plt	1
61	030-0626	2bk62h Sheave	1
62	030-0617	5l640 Belt (Matched Set Of 2)	2
64	940-3093	Belt Guard Weldment	1
65	921-1097	Inner Belt Guard, Bend Down	1
66	090-0162	10-32 X 3/8 Self Tap Type 23	2
67	913-0223	8-1/4" Negative Battery Cable	1
68	913-0266	32-1/2" Positive Battery Cable	1
69	090-0245	1/4 SAE FLATWASHER	2
70	030-0624	Bushing H-1-1/4"	1

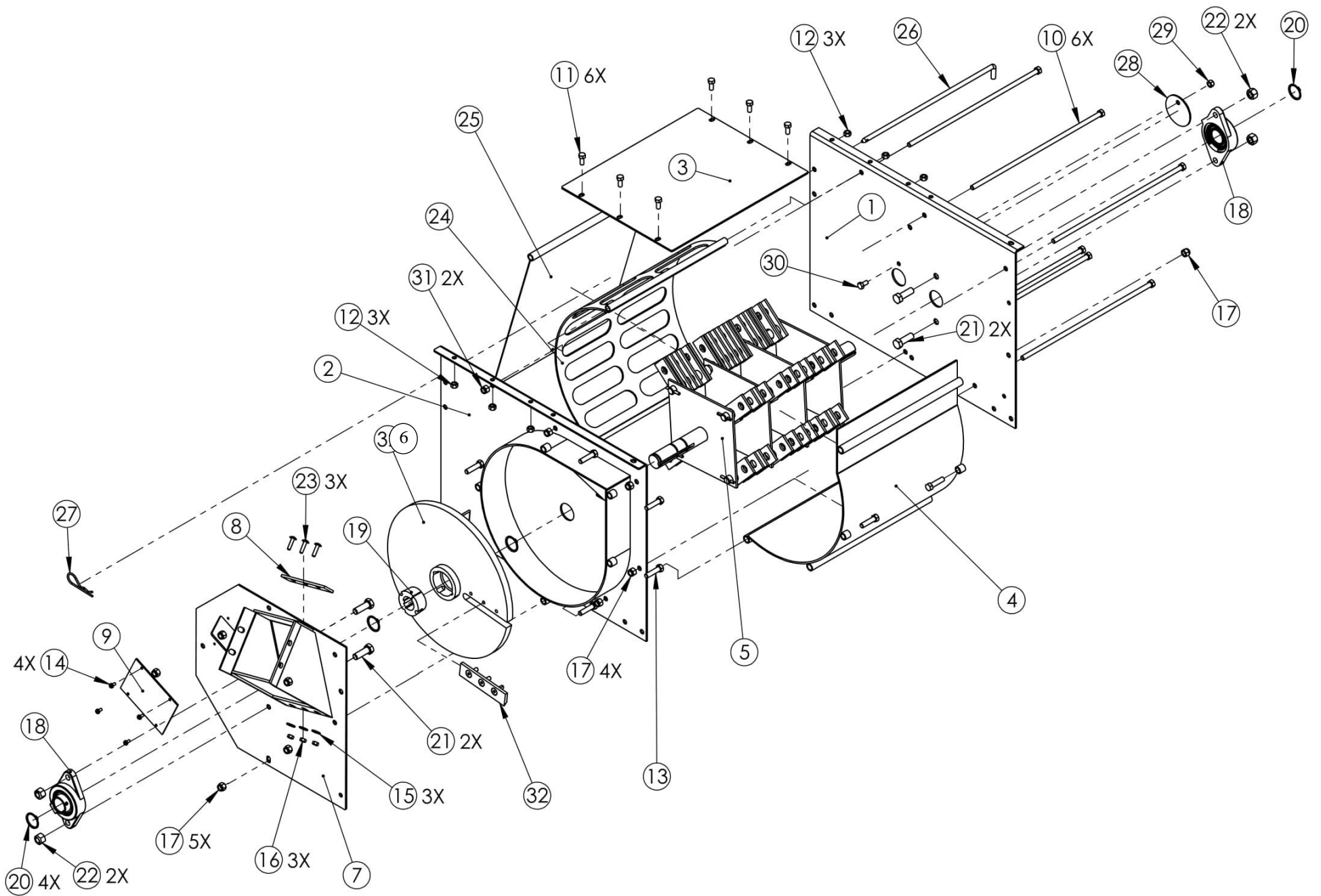


911-0400 BASIC MACHINE

ITEM NO.	COMPONENT	DESCRIPTION	QTY
1	911-0316	Drive Side Plate	1
2	911-0317	Chipper Side Plate Weld (Td)	1
3	921-0026	Top Plate	1
4	921-0003	Scroll Weldment	1
5	911-0315	Rotor Weldment	1
6	921-0267	Chipper Disk Balanced	1
7	911-0318	Chipper Chute Side Weldment	1
8	921-0326	Wear Plate	1
9	913-0210	Access Cover	1
10	911-0050	3/8-16 X 15" Lg Hhcs Pltd (Tie	6
11	090-0066	5/16-18 X 3/4 Hhcs Gr 5 Pltd	6
12	090-0048	5/16-18 Gripco Locknut Gr B Pl	6
13	090-0112	3/8-16 X 1 1/2 Hhcs Gr5 Pltd	7
14	090-0162	10-32 X 3/8 Self Tap Type 23	4
15	090-0245	1/4 Sae Flatwasher - Zp	3
16	090-0470	1/4-20 Nylok Locknut Pltd	3
17	090-0049	3/8-16 Gripco Locknut Gr B Plt	10
18	030-0530	1 1/4" Bore 2 Bolt Bearing	2
19	030-0442	1 1/4" Tl Bushing Dodge 119223	1
20	030-0449	1.25 In Retaining Ring Shr-125	4
21	090-0141	1/2-13 X 1 1/2 Hhcs Gr 5 Pltd	4
22	090-0050	1/2-13 Gripco Locknut Gr B Plt	4
23	090-0677	1/4-20 X 1 Gr 5 Carriage Bolt	3
24	921-0054	Oblong Hole Screen	1
25	911-0033	Baffle Weldment	1
26	911-0036	Screen & Baffle Rod	1
27	706-0924	1/8" Hair Spring Cotter - Pltd	1
28	900-0040	Cover Plate	1
29	090-0460	5/16-18 Nylon Insert Locknut P	1
30	090-0067	5/16-18 X 5/8 Hhcs Gr 5 Pltd	1
31	090-0461	3/8-16 Nylon Insert Locknut P	3
32	913-0260	Knife Kit	

911-0451 ROTOR ASSEMBLY

ITEM #	PART #	DESCRIPTION	QTY.
1	911-0315	ROTOR WELDMENT	1
2	900-0100-4	HAMMER ROD	4
3	500-0008	HAMMER	48
4	500-0010	SPACER-5/16"	12
5	500-0011	SPACER-7/8"	24
6	500-0012	SPACER-5/8"	18
7	030-0153	13/64" DIA X 1 1/2" LG DRIVE PIN	4



ROTOR ASSEMBLY

